



The Undying Lands: Elves of Middle-Earth and the Millennial Kingdom

By Noel Joshua Hadley

10/30/2022

[UPDATES](#) | [ARTICLE ARCHIVES](#) | [PATREON](#)

The Straight Road and Flat Earth Cosmology

THE Elves had a method by which they were capable of reaching the **Undying Lands**, and in **'The Lord of the Rings'** cinematic trilogy, **Peter Jackson** never got around to telling you how they did it, but I will. Before I do though, you should know that I watched season one of **'The Lord of the Rings: The Rings of Power'** on Amazon the other day. Woke messaging aside, I am sad to report that they didn't spill the beans either, though I was hoping they might. In both productions, elves were depicted enroute to the Undying Lands. I would very much like to know how to get there, wouldn't you? You'd think something like that would be important. Loose lips sink ships, I guess. Just so we're clear, I do believe

the Undying Lands of Middle-Earth is the very hidden wilderness which we have been talking about. And so, here is what nobody seems willing to tell you.



Tolkien's legendarium addresses the **spherical Earth** paradigm by depicting a catastrophic transition from a flat to a spherical world, in which Aman, the continent where **Valinor** lay, was removed "from the circles of the world".^[3] The only remaining way to reach Aman was the so called **Straight Road**, a hidden route leaving Middle-earth's curvature through sky and space which was exclusively known and open to the Elves, who were able to navigate it with their ships.

Flat-earth cosmology [edit]

Arda [edit]

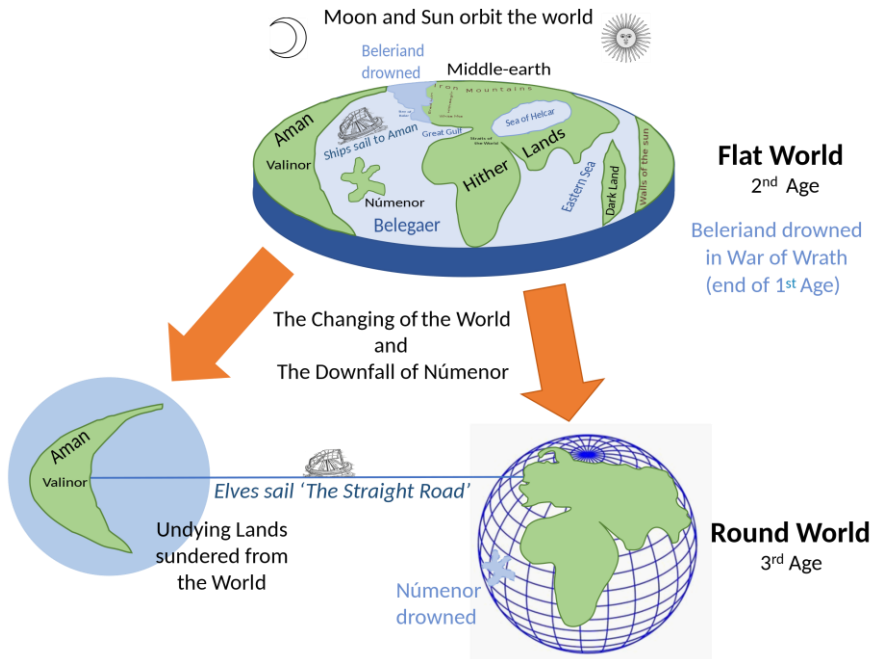
Ilúvatar created Arda (Earth) according to a **flat Earth** cosmology. This disc-like Arda has continents and the seas, and the moon and the stars revolve around it. Arda was created to be the "Habitation" (*Imbar* or *Ambar*) for the Children of Ilúvatar (Elves and Men).^[4]

The world of **J.R.R. Tolkien** was **flat**, who knew? There is even a [Wikipedia page](#) to back that claim up. It *says* the disc-like earth had continents and seas, and that the sun, moon, and stars revolve around it. Oh *gee*, I wonder why Hollywood is silent on the issue. Tolkien was totally *in the know*. I very much wish I could time travel to post-War Oxford so as to enroll in one of his classes on the happenstance that I might raise my hand after the lecture and ask him if water always found its level in Middle-Earth. I would ask the same thing of **C.S. Lewis** and Narnia if I had the chance, as I have that sinking feeling that they were both closeted flat earthers, leaving clues wherever they could. Does the horizon always rise at eye level? Apparently the lack of gravity wasn't an issue. Nor are there any accounts of people sailing off the edge that I know of. And believe it or not, I have just solved the riddle as to how one reaches the Undying Lands. One can do so but only if they recognize the earth is flat. Because the Undying Lands do not exist upon a globe, you see. Knowing is half the battle.

All indicators would have me conclude you have to go *beyond* the pole to arrive there. Somebody is already writing their rebuttal to explain how I would pop out on the other side of the earth if such an endeavor were attempted. This is undoubtedly where your globe earth indoctrination will do its work. I will once again remind you that the wilderness is hidden from our maps. Even the AE projection map doesn't dare venture beyond

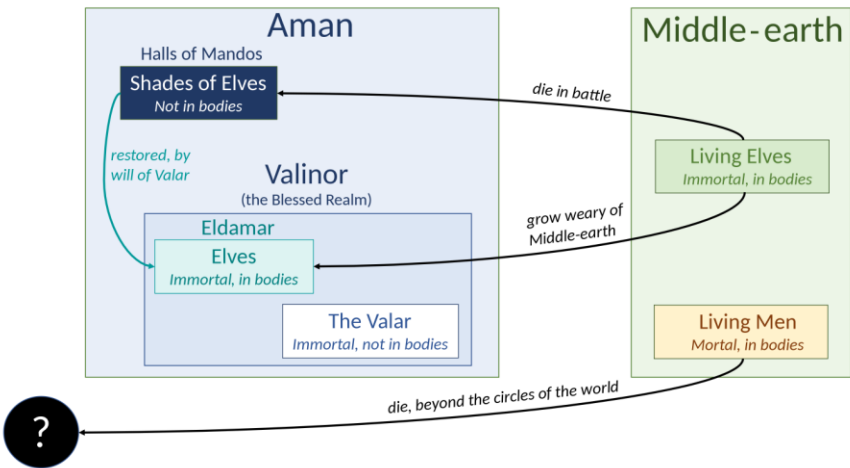
what Mercator allowed for. Therefore, I am thinking you will need to unlearn what you have learned, should one hope to locate its coordinates on an Elvin ship. Let's keep reading.

At some point in Middle-Earth history, Tolkien depicted a catastrophic event which had the world transform from a flat to a spherical realm. *Lame*. It is that episode which has the island of Numenor sink into the sea if you know your lore. 'The Rings of Power' appears to be leading up to that event, though I will be surprised if flat earth cosmology ever comes into the discussion. Still lame though on an exoteric level. Alahayam did not create a flat motionless realm only to change his mind so as to prove the Kabbalah people right. On an esoteric level, however, it's brilliant and makes sense, all the sense in the world. Keep reading. It says the undying land was removed "from the circles of the world." Aman could still be reached but only upon the so-called Straight Road, a "hidden route leaving Middle-Earth's curvature" through sky and space. So that is what NASA is doing with their rocket ships. The way they arch into the sky and land in the water again, just beyond the horizon. They've taken the Straight Road. *Brilliance*, I tell you.



The Wikipedia is kind enough to include an illustration detailing precisely how our Controllers hide the land from us. As you can see, Aman exists

on a flat earth map but not on a globe. It takes “the Elves” to land there via “The Straight Road.” *Wink-wink*. If you need this spelled out for you, 71% of the *planet’s* surface is water according to official estimates. Even going according to the standard AE flat earth map, the surface of water would be a much greater percentage than that, particularly in the southern hemisphere where NASA controls all international flight paths and direct flights are not allowed, though the continents appear somewhat near. They could be hiding all sorts of geographical locations, given the extra padding.



Wiki is a gift that just keeps on giving this time around. Because here is yet another diagram that is laid out for us with the simplicity of a lemonade stand. The immortal elves of Middle Earth living in bodies are generally presented with only two options. One is to die in battle. The other is to grow weary of the world and sail away to Valinor from the Grey Havens, as we have seen in the LOTR movies. Should they be separated from the body via death in battle, they are gathered as shades in the Halls of Mandos. Either way, the Hall of Mandos appears to be a geographical location within Valinor, the Blessed Realm. After brief respite in the Halls, the immortal Elves are said to be re-embodied so as to be returned once more to their kin. I would think we’re talking about Valinor by default, but it appears as though they can return to Middle Earth again, once receiving a new body again. We even have a living example of how it works in the LOTR stories, practically speaking.



[**UPDATE** 6/13/25: THE world of J.R.R. Tolkien may have been flat, but it was also called **Middle-Earth**, and that right there is a reference not only to the **Middle-Ages**, but the **Millennial Kingdom**. I hate to do this, pack on additional homework, that is, but for this UPDATE, it would do you some good to read [500 Years of the Phoenix](#). Because in that one I discovered an epic Medieval poem called **'The Phoenix'**, not to be missed. The cosmology described to us is precisely on par with everything I've been researching in [The Hidden Wilderness](#). It is a bullseye with **C.S. Lewis'** **Narnia** as well. In it, we are treated to a vast circular plane with an ocean that surrounds the continents and an enormously tall mountain at the ends of the earth, which is none other than the **Blessed Realm** of the saints. See for yourself.

I have learned that there is the **best of lands** far from here,
in eastern places, according to the report of men.
This corner of the world cannot be reached by folk-rulers,
many across middle-earth, for it is withdrawn beyond
them
the sin-makers, by the might of the Measurer. Lovely is
this whole land,
blessed with joys and with the fairest odors of the earth.

The Phoenix

BTW, the poem is several hundred lines, but for your own sanity, I've only sampled the first several—and *there it is*. **Middle-Earth**. Tolkien was repackaging the cosmological world of the Medievalists. That is to say, Middle-Earth was not a fictional realm because the people of a distant age inhabited it. Contextually speaking, there is no middle-earth without a **terrestrial paradise** to surround it. And more pointedly to this discussion, it was the **Millennial Kingdom**.]



Glorfindel is one such example of an elf who died in a battle with a **Balrog**. So bad ass. He then arrived at the halls of Mandos only to be deemed worthy of returning to Middle-Earth again in both spirit and flesh. Do you recall who else died while fighting a Balrog only to return from eternity? Gandalf held the same fate. Very few know of his story, but he can be seen standing next to Elrond at the closure of Peter Jackson's 'Return of the King.' Afterwards, Glorfindel sailed with Gandalf, Bilbo, Galadriel, and Frodo and company to the Undying Lands once and for all. It is with the final parting of the elves *via* The Straight Road that gave way to the world of mortal men.



Something you may have noticed with the lemonade stand chart is that mortal men do not travel to the Blessed Realm after their death. Where

they end up is anybody's guess. I suppose I need to take a phone call with a Tolkien expert on that one, though traveling "beyond the circles of the world" has all the appearances of being sectioned off to yet another portion of the greater realm.

And anyways, the elves of Middle-Earth just so happen to come across as the resurrected sainthood of the Millennial Kingdom. Some of us have been holding discussions on the comparisons as of late. On a purely exoteric level, elves take on the appearance of men in nearly every way, except for the Spock ears, that is. Like I said, they are immortal beings, simultaneously maintaining both a spiritual and physical duality in the world they inhabit. By no coincidence do the elves see themselves as guardians of the realm. Their very existence promises to create a perimeter around the gushing tidewater of evil, particularly the long-promised return of **Sauron**, and it seems as though *many* mortal men despise them for it.



The men of Numenor have a particular disdain for the elves. But then, so do the men of Gondor, not overlooking the large swath of men who preferred Sauron's rule in Mordor. can barely think of a better allegory for what it must have been like for the Millennial Kingdom saints, particularly towards the end when they sailed off for Mount Tsiyon. "The Rings of Power" introduced a romance between a white mortal woman and a black immortal elf to keep it spicy. Representing diverse people groups as a method of appeasing woke sentiments is not my focus here, though it may be a case of **cultural vandalism**. That being said, what better way to showcase mankind's hatred of the elves than a white woman, a white *mortal* woman, dating a black guy, and a black immortal one to boot?



[**UPDATE 10/15/23:** NEARLY an entire year has gone by between the last paragraph and this one. I would ask where the time has gone but most of you already know the years are short whereas the days are long. And as you are also likely aware, I have many topical papers to tend to, most of which have been collecting dust. Some are even buried under the fodder stack. The Undying Lands of Middle-Earth was intended as a side note to the larger discussion at hand, that being the hidden wilderness, location of the kingdom of heaven upon the earth, as well as the elves being a stand-in for the Millennial Kingdom saints. Well, I've been snooping around in Tolkien lore as of late, retreading old trails, and have stumbled upon some new information which somehow evaded me on the last go-around.

'The Rings of Power' is intended as a five-season series purposed with leading us up to the destruction of Numenor, whereby the world was transformed from a flat to a spherical one. **Isildur** is a featured character, and we know him to be a survivor of the impending Numenor destruction event because he participated in the last alliance of men and elves against Sauron, thereby indicating the intended climax of the series. Recall how **Aragorn** was Isildur's heir in 'The Lord of the Rings' trilogy. Tolkien lore has it that Isildur and his brother Anárion founded and jointly ruled Gondor while **Elendil** their father dwelt in Arnor in the north. It is Isildur who cut off Sauron's hand and retrieved the One Ring of power but was incapable of destroying it in Mount Doom. His refusal to do so allowed Sauron to live on. Isildur was later killed by Orcs in the Disaster of the Gladden Fields, and the Ring was lost for nearly 2,500 years.



In *The Lord of the Rings: The Rings of Power*, Pharazôn's character is altered considerably: instead of a war-leader and frequent seafarer involved with Middle-earth, he is the chancellor to Queen Regent Tar-Míriel, and of a different personal appearance than Tolkien describes. He has a son, named [Kemen](#).

The series also depicts a character named [Pharazôn](#). Viewers have been bemoaning the woke sentiments as well as the liberties it has taken with Tolkien lore, and Pharazôn is no exception. Pharazôn's character is altered considerably. Leave it to [LOTR Fandom](#) to point that fact out. Instead of a war-leader and frequent seafarer involved with Middle-earth, 'The Rings of Power' has him becoming the chancellor to Queen Regent [Tar-Míriel](#), and of a different personal appearance than Tolkien describes, no less.

Speaking of which, the Queen Regent was white in Tolkien's source material whereas **cultural reappropriation**, a common side effect of the woke disease, has made her the queen of a different shade of color. I'm guessing this decision plays in with the white patriarchy. Because what happens is that Pharazôn usurps her throne, becoming Ar-Pharazôn. He furthermore marries Tar-Miriél against her will, renaming her Ar-Zimraphel.

Supposing 'Rings of Power' doesn't veer too far from the source material, then this is how we can expect the story to play out. Ar-Pharazôn sails from Numenor to Middle-earth to challenge Sauron on the basis that Sauron claims to be the King of Men and overlord of the realm. The short of it is that Sauron's armies flee and Sauron surrenders. He's brought back to Numenor as a prisoner, though surprise-surprise, he quickly seduces the king, promising him and the other citizens of Numenor eternal life if he should worship his master **Melkor**. Ar-Pharazôn then sets out building a temple dedicated to Melkor, where human sacrifice is offered.

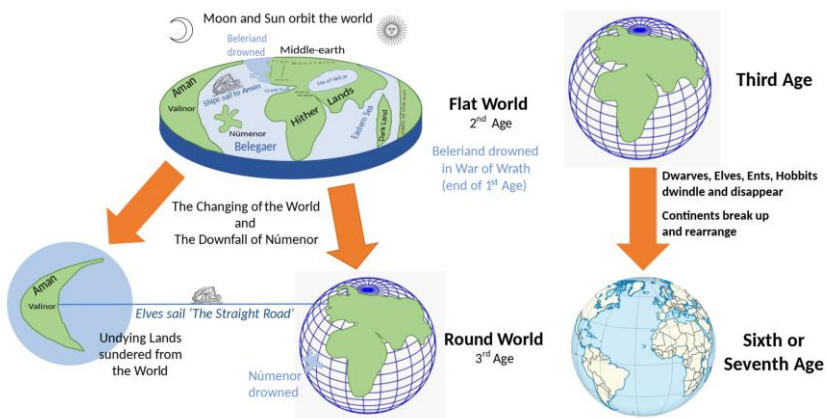
It is during this dark turn of events that the White Tree **Nimloth** is cut down and burned as yet another sacrifice to Melkor. The tree stood before the King's House in the capital city of Armenelos, its fate being tied to the line of kings. Isildur is successful in rescuing a single fruit from the tree which in turn becomes an ancestor of the White Tree of Gondor.



But then Sauron's deception doesn't end there. Ar-Pharazôn's worship of Melkor is a package deal which includes the promise of immortality. In order to achieve that however, Ar-Pharazôn is tasked with building a great

armada and sailing to the Undying Lands, so as to make war upon the **Valar**, thereby seizing his own divinity. How convenient that Sauron remains behind. Once landing upon the shores of Aman, **Manwe**, chief and king of the Valar, calls upon **Eru Illuvater**, the One True and Most-High Elohiym of Tolkien's lore. My aim is to comment more upon the Valar as well as the very fascinating Manwe character, though not today.

In response to Manwe's prayer, Eru transforms the world from a flat to a spherical earth. The remodeling project results in Numenor sinking beneath the ocean. Ar-Pharazôn's fleet is destroyed and even Sauron is a resulting casualty of the cataclysm he had helped to bring about. His body is destroyed, assuring that he can never again assume a fair form. Though he is capable of returning to Mordor and ruling there as a benevolent spirit. The aftermath has Elendil along with his two sons, Isildur and Anárion, founding the two Kingdoms in Exile: Arnor in the north, and Gondor in the south, both of which hope to maintain Numenorean culture.



And *there* it is. The transforming of the world from a flat to a spherical earth served two purposes. The resulting oceanic upheaval was a judgement upon the rebellion of Numenor. Though Numenor is an obvious stand-in for Atlantis, we can easily substitute Tartarian society and the mud flood. But then, first and foremost, the globe earth was intended to hide the Undying Lands from the world of mortal men. Should men be given the roadside directions, we know what comes next. It's the Tower of Babel story. They will attempt to murder the King and claim immortality as their own.

We have already seen the episode play out in Psalm 48 when a confederacy of kings led by a fleet of ships from Tarshish attempted to invade and attack the king of Tsiyon in the uttermost north. And of course, as I pointed out, the Psalm was written by the Sons of the Ice Wall. Everyone keeps asking me for the GPS coordinates. I can give them to you, but you'll have to do the homework as well as the follow-up in Scripture. There is only one pathway to the Undying Lands, and it is a life well lived under the service of our Creator.]

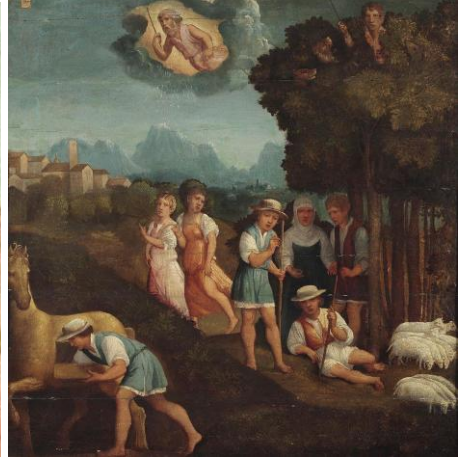


Glorfindel and the Hidden Spiritual Realm

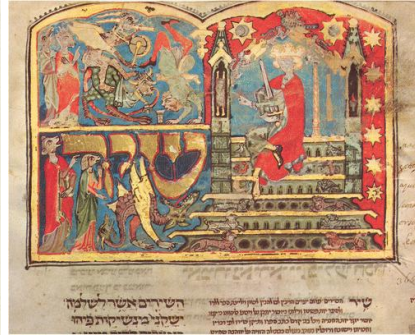
[**UPDATE 11/20/23:** OOPS, looks like I dropped the ball. When using Glorfindel as an example, that is. Don't get me wrong, he was a very good example, a superb and probably the most illustrious case of a Middle-Earth resident who *also* doubled as an inhabitant of the Blessed Land in the west, beyond the ocean. What happened is that I failed in conveying precisely how spot on he and others are as examples of the MK sainthood. When originally making mention of him, I hadn't read 'The Lord of the Rings' since college, and the intervening decades since, 9/11 as well as the Bush, Obama, Trump, and Biden Administrations and thousands of psyops packed within, have had a way of thinning the intricacies of his bio. It's for these very reasons that I decided to re-read LOTR again, mostly as a pleasure cruise.

As a reminder, I am attempting to make comparisons between the elves of Middle Earth and the kings and priests of the Millennial Kingdom. Well, in the movie, Steven Tyler's daughter **Arwen** and her horse carry Frodo on the final leg of his journey to Rivendell, only to be confronted by the Ringwraiths at the Ford. *Oops*, I'm full of all sorts of mistakes today. I meant to invoke Elrond's daughter rather than Arrowsmith, what was I thinking? Anywho, how could I have forgotten that it is Glorfindel who

intervenes, having been personally dispatched from Elrond, and that it is his horse which Frodo rides to Rivendell, only to have the Ringwraiths swept away at the Ford? The contrast between Glorfindel and the Ringwraiths once again has real world application. To explain their differences though, I'm thinking the Ring of Power quickly needs to come into the discussion.



I've already skimmed over the magic ring in my [Narnia Reset](#) paper, but seeing as how **C.S. Lewis** and Tolkien were tapping into the same source, it deserves repeating here. Lewis of course was a card-carrying Platonist, and in Book 2 of his Republic, **Plato** offers a hypothetical magical ring which makes its wearer invisible. He calls it the **Ring of Gyges**, the name of the shepherd entrusted with it. Through his invisibility, Gyges seduces a queen, kills the king, and takes the kingdom. If that sounds like a setup for **Queen Jadis**, aka the White Witch, and the killing of **Aslan**, then clearly, you have seen how Lewis was not ripping off Tolkien's ring trilogy. The defining difference between Lewis and Tolkien is that the rings of Narnia lore snatch its wearer into other worlds, whereas Tolkien's ring has the power to enter its ringbearer into the spiritual realm. Actually, now that I'm thinking about it, Narnia and the worlds of Lewis might as well be the greater spiritual realm, but that is another discussion at this point.



There are other magic rings probably worth mentioning. One that comes to mind is the **Ring of Shalolah**, a gift he was offered by the archangel Gavriy'el in 'Testament of Solomon'. Though he wasn't made invisible or pulled into the spiritual realm, the rings' intended purpose was to summon the spiritual world to him, particularly unclean ruachoth. And of course, with Shalolah's power came corruption. The victory was ultimately theirs. His weakness was women. The king of Yashar'el had a decision to make. If he wanted to add to his rotunda of wives, then the worship of Ashtoreth and Molek, entities from the spiritual realm, was the way to go, apparently. Like Gyges afterwards, it is the ring which empowered him to make evil decisions.



And like Shalolah, the Ringwraiths of Middle-Earth had also been kings at one time. Nine rings were gifted for mortal men, doomed to die. In turn, their wearers fell under the control of Sauron, the rings maker. Something which the movies don't make abundantly clear is that the

inhabitants of the spiritual realm, particularly the wraiths, can only faintly see the material sunlit realm which we inhabit. We are but shadows to them in the light, just as they are but shades to us in the night. That is the reason as to why they were only capable of focusing in upon Frodo and then piercing him with their sword when he put the ring on, because, in doing so, he entered the wraith world. They could see him and he them, shining as bright pale lights.

Getting back to Glorfindel, but first, where does Glorfindel hang his hat? That depends upon the timeline of his life, obviously. He lived in Middle-Earth, died in combat with the Balrog, arrived in the Blessed Land beyond the ocean, and then returned to Rivendell, so as to accomplish his task, but that is not the whole of it. After Frodo awakes in Rivendell, having narrowly escaped becoming a wraith (he slipped on the ring only to be stabbed in the spirit realm), he then asks Gandalf all about the wraiths as well as the servants of Sauron, who were even then becoming emboldened, sweeping over the world of men. Here is what we read of their conversation. It is Frodo asking and Gandalf responding.

‘What about Rivendell and the Elves? Is Rivendell safe?’

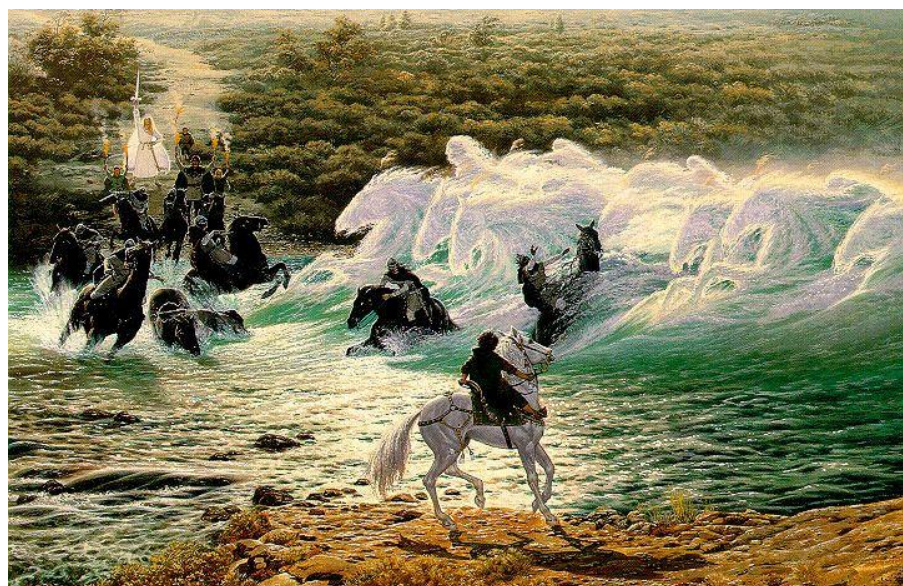
‘Yes, at present, until all else is conquered. The Elves may fear the Dark Lord, and they may fly before him, but never again will they listen to him or serve him. And here in Rivendell there live still some of his chief foes: the Elven-wise, lords of the Eldar from beyond the furthest seas. They do not fear the Ringwraiths, for **those who have dwelt in the Blessed Realm live at once in both worlds**, and against both the Seen and the Unseen they have great power.’

‘I thought that I saw a white figure that shone and did not grow dim like the others. Was that Glorfindel then?’

‘Yes, **you saw him for a moment as he is upon the other side**: one of the mighty of the Firstborn. He is an Elf-lord of a house of princes. Indeed, there is a power in Rivendell to withstand the might of Mordor, for a while: and elsewhere other powers still dwell. **There is power, too, of another kind in the Shire. But all such places will soon become islands under siege if things go on as they are going.** The Dark Lord is putting forth all his strength.’

TLOTR: Book Two: Many Meetings

The answer as to Glorfindel's home address is that he inhabited both geographical locations simultaneously. With one foot, he straddled Middle-Earth, the other, the Blessed Realm. That's a confirmation and all that we need to know in the course of this conversation. The Undying Lands *is* heaven, though it be on the earth. That would make it the kingdom. The kingdom of heaven.



Frodo then asks if Glorfindel was the bright shining figure whom he saw on the shore at the moment when the water spirits (in the form of horses) washed the Ringwraiths away. To which Gandalf replied with a big fat YES. Indeed, he had seen him as his appearance would have it on the other side of the spiritual curtain. It should be noted that Frodo also saw shadowy figures waving flames behind Glorfindel. Those would be his

16

mortal companions, Aragorn and the three hobbits. The Ringwraiths nearly had Frodo. That is to say, he was only moments away from becoming one of them. He had entered the spiritual world of the Ring so that mortals would become shades and the resurrected would be seen as they truly are—glorious, illuminated beings.

There is some theology for you. Now, take what you've just learned and apply it to the resurrected sainthood ruling as kings and priests of the Millennial Kingdom. Could they be hiding in plain sight? Have they been depicted in paintings with the appearances of the mortal, material realm rather than their dualistic counterpart is a question worth asking. Checkerboard floors, anyone?



MK Saints and the Suits of Armor They Left Behind

[**UPDATE** 6/2/25: AND now for a word from our commercial sponsor, [The 144,000 Were Women](#). A few years have passed since I wrote that piece, so my recollection may be a little rusty, but if I recall correctly, the many Medieval portraits of ladies were implied to be candidates for

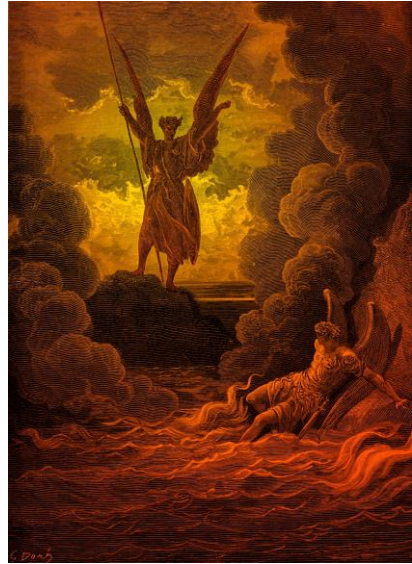
Millennial Kingdom inhabitants. I even said as much *here* in my **11/20/23 UPDATE**. It cannot be overstated how profound Tolkien's description truly is. I'm talking about the part where Frodo slips on the ring and sees Glorfindel's true spiritual self rather than his material counterpart. That tells us all we need to know about the resurrected saints hidden-in-plain sight game. Now that I'm thinking about it, we might want to consider that option when [Michelangelo the Divine](#) comes into play as well.



Every parent out there knows what happens when you give a mouse a cookie. He will ask for milk. A similar thing happened to me a couple of years ago when reporting on Frodo's vision of Glorfindel. Months afterwards, still thirsty for that glass of milk, I took the children to the **Smithsonian Institution**, though it will always be the [Smithsonian Institute](#) to me, when I happened upon their Medieval collection. Let's just say I was in heaven on earth.

It was while staring at the sculpture of an **unknown angel in armor**, complete with two **Judah lions** for shoulder plates, which sparked the next stage of my revelation. I've since shown him to others, and without even suggesting the possibility, they immediately blurt out how much he resembles one of Tolkien's elves. I even spy the **Green Man** on his breastplate, and where had I seen that before? First of all, there is my [Green Man](#) paper for your consideration, but then, 'The Rings of Power' includes an elf character named **Aronidir**, and he too wears a **Green Man** on his breastplate. *Incredible*. I call my weekly roundtable meetups KINGDOMVERSE for a reason, and you are all invited to them. Don't you just love it when the research comes together?

If that is an angel, then it is only an angel as perceived through the mortal's lens if you get my drift. His skin is smooth, and his cheeks are rosy when in fact he should be a flaming torch, blinding us all with his brilliance, and he isn't. The case has already been made in [Wastelands of the Seraphiym](#) that spiritual entities can only be perceived through the left and right sides of our brain informing the other. But then, what of his armor? It is beautiful to behold. Beautiful but material none-the-less. I think I know what is going on. This will require some exposition.



In [Azazel and the Five Satans](#), I made the case that **Gadr'el** and **Azazel** are indeed the same person, *er*, I mean, the **Satan** that we know from the Bible, even if they are given two separate names, just as assuredly as **Satana'el** is another one. Not going over that again. Something that Gadr'el and Azazel have in common is that they are both accredited with leading **Cha'uaha** astray, though most know her as Eve. Not covering that today, either. It's the armor that I want you to see.

<p>⁶ And the third was named Gadr'el: he it is who showed the children of men all the blows of death, and he led astray Cha'uaha, and showed the weapons of death to the sons of men the shield and the</p>	<p>8 And Aza'zel taught men to make swords, and knives, and shields, and breastplates...</p> <p>1 Chanoch 8:1a</p>
---------------------------------------------------------------------------------------------------------------------------------------------------------------------------------------------------------------------------------------------	--------------------------------------------------------------------------------------------------------------------------------------------------------------

coat of mail, and the sword for battle, and all the weapons of death to the children of men. 7

And from his hand they have proceeded against those who dwell on the earth from that day and forevermore.

Chanoch 69:6

Gadr'el-Azazel introduced swords and armor to mankind, which is not the same thing as saying he created them. Satan creates nothing. All he can do is distort or invert a good thing, mirroring it in his image—the face of death. The newbies out there might be wondering where he nabbed the technology from if he didn't create it. Like **Prometheus** with fire, the **Watchers** stole the **Mysteries of heaven**, which is to say, they plagiarized righteousness, teaching it as their own and in an unrighteous way, resulting in an unrighteous people. We know that swords and armor preexisted the Genesis 6 incursion because of what we read in Genesis 3.

YAHUAHA Alahayam, the EVER-LIVING, consequently expelled him from the Garden of Aydan, in order to cultivate the ground from which he was taken. So, He drove out the man, and **He stationed at the east of the Garden of Aydan ha'charabayam—the Divine Watchers—with the flaming sword** to guard the path to the Tree of Lives.

Barashayath (Genesis) 3:23-24 [Paleo]

You have just read from **Paleo Genesis**, which was published by our very own **Pamela Glasgow**, and is available for purchase at the [TUC Store](#). She's a big Hobbit fan, by the way. I am told she reads it out loud in all the different voices and have even heard firsthand evidence of this. Notice the key difference between the swords which Azazel offered humanity and those which the Watchers guarded the Tree of Lives with. The Watchers of Genesis 3 held flaming swords, whereas mankind has never been granted the pleasure of handling lightsabers. They are different but not really. Stop and think about it and they're really the same. Already, the reason should be self-evident. A sword removed from the hands of a fiery angel and placed into the hands of a mortal would no longer flame as it once did.



Then again, based upon what we are continually shown in artwork, and also what I have researched in [Wastelands of the Seraphiym](#), I have to wonder if we're incapable of seeing the flaming component. There's still more to the puzzle that I haven't covered yet. I'm thinking a passage from 2 Enoch should help to expand our peripheral vision.

28 And then I made firm the heavenly circle, and made that the lower water, which is under heaven collect itself together, into one whole, and that the chaos becomes dry, and it became so. ² Out of the waves I created rock hard and big, and from the rock I piled up the dry, and the dry I called earth, and the midst of the earth I called abyss, that is to say the bottomless, I collected the sea in one place and bound it together with a yoke. ³ And I said to the sea: Behold I give you your eternal limits, and you shalt not break loose from your component parts. ⁴ Thus I made fast the firmament. This day I called me the first-created.

29 And for all the heavenly troops I imaged the image and essence of fire, and my eye looked at the very hard, firm rock, and from the gleam of my eye the lightning received its wonderful nature, which is both fire in water and water in fire, and one does not put out the other, nor does the one dry up the other, therefore the lightning is brighter than the sun, softer than water and firmer than hard rock.

² And from the rock I cut off a great fire, and from the fire I created the orders of the incorporeal ten troops of angels, and their weapons are fiery and their raiment a burning flame, and I commanded that each one should stand in his order.

³ And one from out the order of angels, having turned away with the order that was under him, conceived an impossible thought, to place his throne higher than the clouds above the earth, that he might become equal in rank to my power. ⁴ And I threw him out from the height with his angels, and he was flying in the air continuously above the bottomless.

2 Enoch 28-29

Unlike **A'dam**, who was formed from the red earth, the angels were cut from a rock, via fire. Isn't it interesting how the author of 2 Enoch explains that their weapons and their armor are fiery and that they too derived from rocks? He is probably describing **steel** among other precious minerals. Yes, steel comes from rock, specifically from iron ore, which is first mined, and then processed through various stages, including **smelting in a blast furnace**, to extract the iron and produce steel. **Swords** are made from steel, but then so are **guns**. Though guns are mostly made from steel and **aluminum**, try not to forget that aluminum is primarily extracted from rocks, specifically **bauxite**. That is to say, swords and guns are a heavenly technology.





My revelation at the Smithsonian, you know about. That curiosity went into overdrive a couple of weeks ago when touring the **Tower of London**. Their suit of armor collection is 'Straight Outta Heaven' if you want my assessment of the situation. What we are observing are the bones of the Millennial Kingdom. Have you ever observed two knights in suits of armor attempt to battle the other? They are clumsy as hell. Yes, I have watched Medieval jousting in person, and it's all sport and ceremony, with the outcome already being decided upon. That is just my opinion, but then, standing around in the Tower, listening in to other people's conversations, you can hear them saying the same thing. "How did they ever function in those things?" is what everybody wants to know. Not to mention using the bathroom.



In **Lewis Carroll**'s 'Through the Looking Glass,' the **White Knight** is the clumsiest characters on the board, always falling off his horse. Good thing Alice was there to pick him up. **Don Quixote** was written by **Miguel de Cervantes** in **1605**, and he doesn't fare much better. Call me a conspiracy theorist, but it seems as though these authors were agreeing with our own cognitive dissonance when pointing to the absurdity of fully suited knights in combat. Perhaps they were never intended for mortals to begin with.]



[**UPDATE** 6/13/25: AMAZON's **Rings of Power: Season Two** was a boring **\$458 million** affair for the most part but why focus on the Debbie Downer's when there were some aspects done impeccably well. Sauron's deception was Grade-A material for starters. While disguising himself as **Annatar**, the "**Lord of Gifts**," he convinced **Celebrimbor** the master **Elven-smith** to do the dirty deed and forge the **One Ring** rather than creating it himself. How very HaSatan of him. That is his tactic, you know, telling us what to do and then, after we are accused of our crime, asking of us, "Why did you listen to me?" Don't do that. Don't be a Celebrimbor.

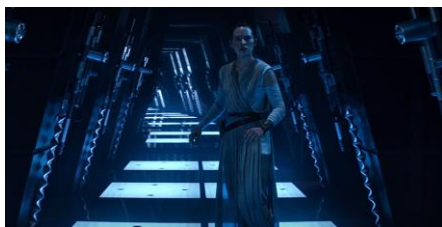
I can't help but wonder if a deception of that scale happened at the close of the Thousand Year Reign.

After going LIVE on YouTube with my co-host **Jenna Rose** a week ago and discussing the armor situation, it occurred to me that I didn't explain myself very well, because people began writing in asking for clarification. Not only are swords and armor an angelic technology, but they were also created on the same day as the angels, according to 2 Enoch, and in fact right alongside of them. Yes, that is what I am saying, that Medieval suits of armor may in fact be residues of the Millennial Kingdom saints. It plays into the underlining theme of this paper, which is to suggest a relationship between the Elves of Middle-Earth and the MK saints. After thinking about it further I have more to say.



Throughout Tolkien's work, the craftsmen of weapons and armor are elves for the most part. Remember Aragorn's sword in The Lord of the Rings trilogy. The books and the movies vary slightly in detail but only for storytelling pacing. In both instances, it is called **Narsil**. The sword was forged during the First Age by the famed **Dwarven-smith Telchar** of Nogrod. Okay, so he wasn't an elf, but after Elendil was killed while battling Sauron and the sword was cut in two, we then see it in procession

of the **Elves** at **Rivendell**, albeit shattered in pieces. It is the **elves** who forge it together again. And when placed into the hands of Isildur's heir, the blade of steel has the ability to withstand a cursed phantom army. Indeed, there is a relationship between the weapon and the armor with its wielder and wearer. That is what I'm saying. Like **Arthur** with **Excalibur**, or contrarily, **Moshe**, **Yoceph of Arimathea**, and **YASHA'UA** with the [Rod of Power](#), Narsil yields its authority under any other user.



Recently, I have been putting some additional work into [The End of the Millennial Kingdom and Star Wars](#). There are enough similarities in the Prequel Trilogy to wonder if **George Lucas** was looking over Tolkien's shoulder and taking Millennial Kingdom notes. Not just Lucas though. **Gene Rodenberry's Khan** and **Spock** narrative just so happens to mirror **Genghis Khan** and **Prester John**, which I also covered in [The Legend of Prester John](#).

Disney's Star Wars Episodes VII-IX were a mess—I know. But again, why focus on the Mary Sue's, the Debbie Downers, and the Karens? **Rey's** discovery of **Luke Skywalker's** lightsaber in Episode VII was at least thought provoking, harkening back to Arthurian legend. *It called to her*. Immediately after retrieving it from a box, she is enraptured by a vision that can only be explained by an external consciousness or drugs. During the movie's climax, **Finn** attempts to use the same lightsaber against **Kylo Ren**. It does him no good and he is struck down. Kylo then uses the Force to wield the lightsaber, but the Force doesn't choose him. Flying right past Kylo, it lands into the hand of Rey. Perhaps the armor of the Millennial Kingdom was designed with its Master in mind.



And now that I'm thinking about it, **Docetism** is a research paper which I really need to write. I have covered the topic in [The Gospel of Peter: A Commentary](#) as well as in online videos like [Untold Mysteries of the Nativity](#), but never its own paper, and that is a crime. Quickly, Docetism was a prevalent idea in the early centuries that YASHA'UA's incarnation could not be confined merely to his physical appearance. He was a glorious being all along. I say *prevalent* because books like **The Ascension of Isaiah**, among others, were drenched in Docetic theology, and that was extremely popular. Not going over that again.

Glorfindel is a clear case of Docetism, but then, a little later down the turnpike, even Gandalf showcases his Divine counterpart, if only for a brief moment. It happens when he appears to Aragorn, Legolas, and Gimli in the old growth forest, glowing with illumination. Like Glorfindel, he too died in combat with a **Balrog demon**. Upon resurrecting from the dead (*that is*, returning to Middle-Earth from the Blessed Land), he too

has a dualistic nature, though mortals could only define him by his white cloth. Long story short, the Supreme Being of Arda and Creator of Middle-Earth, **Eru Ilúvatar**, had sent Gandalf back to assume **Saruman**'s role as 'The White'. Saruman of course failed at his mission to protect the realm, having thrown his weight behind Sauron. That is to say, Gandalf had returned to finish his mission.

I don't know why it took me so long to include this passage of Scripture, as I've been using it in my presentations endlessly, but here it is in all its glory.

7 In the time of their visitation they will shine forth and will run like sparks through the stubble.

8 They will govern nations and rule over peoples, and YAHUAHA will reign over them forever.

Chokmah Shalomah (Wisdom of Solomon) 3:7-8

The Millennial Kingdom saints were resurrected beings chosen to rule over the nations. Sons of Yashar'el governing the goyim mortals. They are described here as **sparks** running through the stubble, telling us that they are beings with illuminated bodies, maybe even fire. But did the mortals always see them in that light? I rest my case.]



The Last Strongholds of Middle-Earth

Tom Bombadil didn't make it into the Peter Jackson movie either. He was, however, a weighty presence in the book, and referenced in that conversation between Gandalf and Frodo, which I quoted from. In saying that there was power of another kind in the Shire, it is safe to assume that Tom Bombadil is quite different from Glorfindel. Those differences will now be discussed. After being saved from Old Man Willow, the very tree which ingested Merry and Pippin and attempted to drown Frodo, Tom Bombadil escorts the four hobbits to his home. In a conversation between them, Frodo asks Tom Bombadil concerning his identity, and this is what we learn.

‘Who are you, Master?’ he asked.

‘Eh, what?’ said Tom sitting up, and his eyes glinting in the gloom. ‘Don’t you know my name yet? That’s the only answer. Tell me, who are you, alone, yourself and nameless? But you are young, and I am old. **Eldest, that’s what I am.** Mark my words, my friends: **Tom was here before the river and the trees; Tom remembers the first raindrop and the first acorn.** He made paths before the Big People and saw the little People arriving. He was here before the Kings and the graves and the Barrow-wights. **When the Elves passed westward, Tom was here already, before the seas were bent.** He knew the dark under the stars when it was fearless—**before the Dark Lord came from Outside.**’

LOTR: Book One: In the House of Tom Bombadil

Even according to his own testimony, the origin and nature of Tom Bombadil is unknown. But then, seeing as how he claimed to have already existed before the Dark Lord came to Arda, a safe assumption would be one which assigns Tom Bombadil to the co-ruling alahayam (or elohiyim in modern Hebrew), whom the Divine Father of Ruachoth assigned to rule over our world. Arda in case you were wondering is a reference to the Greater Realm of the Earth. It includes Middle-Earth as well as the Undying Lands in the West. Tom Bombadil even refers to having already existed “before the seas were bent.” There is your flat to globe earth reference, right there, whereas the Blessed Realm can only be found on flat earth maps.

In comparing Tom with the co-ruling alahayam, I'm referencing The Seventy, as mentioned in Devariym (Deuteronomy) 32:8. How their co-rulership over specific tracts of land worked out in our own His-Story is another narrative in and of itself, which I don't intend to repeat here. The quick explanation is that El Elyon gave Yashar'el to YAHUAHA, the Son of Alahayam, as his inheritance. YAHUAHA then went on to inherit the world in the person of Yahusha HaMashiach, our High Priest and King. The other alahayam were judged for not leading as they ought.

Well, Tom Bombadil may be one of them. Living in a valley within the depths of the Old Forest, east of Buckland, his domain was of modest size, though he seemed to possess an unequaled power over the land immediately surrounding his dwelling. The reason as to why there are no other Tom Bombadil tracts of land in Middle-Earth, complete with Tom Bombadil-like creatures to rule them, may or may not be explained by Tolkien, I couldn't say at the moment. Scripture might suggest they fell by the wayside after succumbing to the service of The Dark Lord rather than the Most High, and as I've suggested in other places, some elohiym may very well have stayed on course or repented by the time Yahusha sent out the Seventy (or Seventy-Two by some accounts) in Luqas 10, claiming his inheritance over the world.



Another tidbit stated by Gandalf is that all such places would soon become islands under siege if the course of events continued on as they were going, a common theme in the Millennial Kingdom narrative as well,

leading us right up to our current short season. He is obviously referring to Tom Bombadil's little realm but then their conversation took place in Rivendell, which might as well be a manifestation or an extension of The Blessed Realm upon the earth. In fact, that's very much what it appears to be. I intend to end today's discussion on that note. Tolkien refers to Rivendell as "the Last Homely House east of the Sea." It is actually described in many ways, and I don't care to recount them all, though here is one such quotation from **Samwise Gamgee**, after Frodo has returned to the living (in Rivendell of all places).

'It's a big house this, and very peculiar. Always a bit more to discover, and no knowing what you'll find round a corner. And Elves, sir! Elves here, and Elves there! Some like kings, terrible and splendid; and some as merry as children. And the music and the singing—not that I have had the time or the heart for much listening since we got here. But I'm getting to know some of the ways of the place.'

LOTR: Book Two: Many Meetings

Samwise describes the Elves as kings, both terrible and splendid, while others exhibit the character of merry children. Any parables of Yahusha HaMashiach come to mind? A great deal—many of the songs which are sung in Rivendell derive from the Blessed Realm, no surprise. The tragedy in all of this, both in Tolkien's telling and as it regards our own realm, is that the light of such places did not remain. They shrunk into islands of light surrounded by darkness until the fixtures of light decided to get up and leave. That's what happened to the Elves in Middle-Earth and I'm under the impression that the Millennial Kingdom saints did the same. They got up and left to the Hidden Wilderness. And now, all that supposedly remains within our own realm is the camp of Yah, which HaSatan hopes to surround for a final showdown.]