



THE EARTH

A Monthly Magazine of Sense & Science

Upon A Scriptural Basis,
And of Universal Interest to all Nations and
Peoples under the sun.

EDITED BY E. A. M. B.

ALL RIGHTS RESERVED.

WHICH IS TRUE ?

THE GLOBE OF LAND AND WATER

OR

The Level Surface of Water and Land ?



CONTENTS.

| | page |
|---|------|
| 1. Bedford Level Experiments (illustrated)..... | 1 |
| 2. Dr. Leask, D.D., (Ed. of the "Rainbow") on Joshua x. | 4 |
| 3. Converging Meridians Down South, by <i>E. E. Middleton</i> | 8 |
| 4. The Earth : Is it a Globe ? by <i>The Ed.</i> | 10 |
| 5. Stretched Out Upon the Waters, by <i>E. H. Riches</i> | 13 |
| 6. Bedford Level (reply to a globularist), by <i>The Ed.</i> .. | 16 |
| 7. Earth's Observatory, Letters, &c..... | 21 |

No. 49 & 50.

Four Pence.

Published by Lady Blount, 11, Gloucester Road, Kingston Hill.

SCALE OF CHARGES FOR ADVERTISING IN "THE EARTH."

(INSIDE COVERS).

| | £ | s. | d. |
|--|----|----|----|
| Two lines of not more than 20 words ... | 1 | 0 | |
| Every additional line of 10 words ... | | 4 | |
| Every additional 10 words after the first 50 | | 3 | |
| Quarter of a page ... | 7 | 0 | |
| Half page ... | 12 | 0 | |
| Whole page .. | 1 | 0 | 0 |

RATE OF SUBSCRIPTIONS TO THE EARTH.

| | | | |
|--|--|-----|------|
| One Copy, post free, for One Year, 1/6; or 37 cents. | | | |
| 1 | Copy per month for One Year, post free | ... | 1/6 |
| 2 | Copies " " " " " " " " | ... | 3/- |
| 3 | " " " " " " " " | ... | 4/6 |
| 4 | " " " " " " " " | ... | 5/6 |
| 6 | " " " " " " " " | ... | 8/- |
| 8 | " " " " " " " " | ... | 9/6 |
| 12 | " " " " " " " " | ... | 13/6 |
| 25 | " " " " " " " " | ... | 25/- |

"THE EARTH" is also published by MESSRS. JOHN HEYWOOD, Manchester; JONATHAN NICHOLSON, 22, Budge Row, Cannon Street, London, E.C.; W. PARKER, Bookseller and Publisher, 30, Monteith Row, Glasgow, Scotland; and BROWN & CO., Publishers, 29, Paternoster Square, London, E.C.

All communications should be addressed to E.A.M.B., 11, Gloucester Road, Kingston Hill, England.

Postal Orders should be made payable to E. A. M. BLOUNT, Post Office, Kingston Hill, Surrey, England.

Treasurer Universal Zetetic Society:

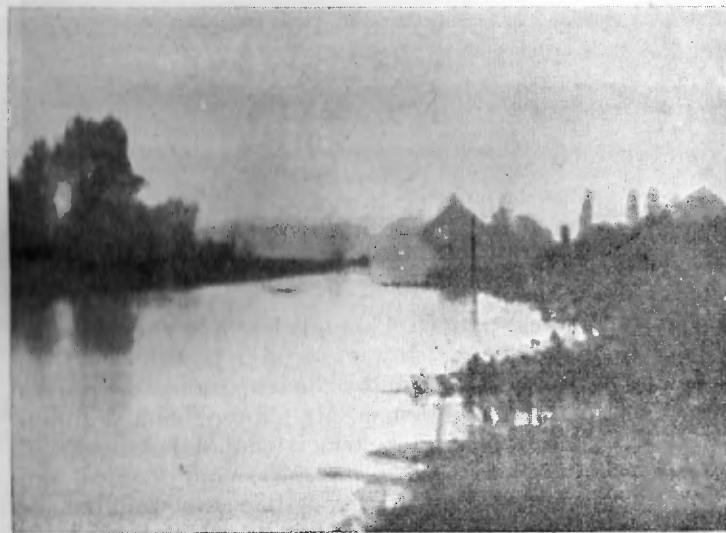
Lady BLOUNT, 11 Gloucester Road, Kingston Hill.

THE EARTH.

VOL. V. Aug & Sept. 1904 Nos. 49 & 50.

BEDFORD LEVEL EXPERIMENT.

We give below two reproductions of the photograph taken on the Bedford Level.

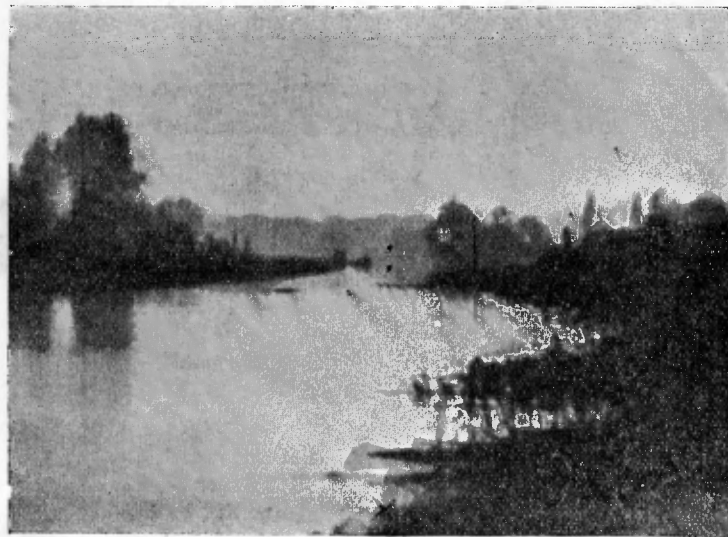


The second photo is marked with dots, a cross, and the letter A, to indicate to the reader the position of the screen, etc.

The two dots (:) are the screen and its reflection in the water below it—near Bedford Bridge.

Trees near this Bridge form a background to the screen, and its reflection rests upon their shadow on the water. The continuation of the canal beyond Bedford Bridge cannot be seen from the direction of Welney Bridge, even quite near it, because there is a junction of canal paths here, and their

several courses can only be seen by standing on the bridge itself, or proceeding to a point beyond it.



Dallmeyer's latest pattern Photo-Telescopic Camera was used for the experiment. It was placed in position less than two feet above the ground-level by the expert operator from Dallmeyer's, and that gentleman, Mr. Clifton, being a globularist (see his letter, printed below) it cannot be suggested that he would lend himself to unprofessional practice, and were such conduct on his part possible he would have sophisticated the instrument, or the *locus in quo*, so as to favour plane-earth teaching; he, however, irrespective of results, acted up to the letter of the test experiment. Mr. Clifton had to lie down, in order to manipulate the instrument, close under Welney Bridge, a distance of six miles from Bedford Bridge, the screen being fixed rather to the right of the bridge. The cross at the edge of the photograph represents the position of the camera.

The letter A is intended to draw your attention to a dark chimney, connected with some works near the canal. This chimney is just midway betwixt the two bridges, *i.e.*, it is

three miles from Welney Bridge, and three miles from Bedford Bridge.

This experiment was carried out in misty and very unsatisfactory weather, on May 11th, 1904, before Lady Blount and several scientific gentlemen, and proves conclusively that if the world be a globe having a circumference of 25,000 miles, the bottom of the screen should have been certainly over 20 feet below the line of vision in the six miles view. As the whole of the screen, and its reflection in the water beneath were observed and photographed, no curvature can possibly exist; the theoretical scientists are wrong and beaten, and Parallax, John Hampden, Wm. Carpenter, and the army of Zetetics were, and are, right in their contention that the World *is not* a globe!

* * * * *

To Lady Blount.

Dear Madam,

Referring to the experiments at Salter's Lode, Downham, Norfolk, May 11th, 1904, I have much pleasure in testifying to the fairness of the conditions under which they were conducted. I arrived on the spot with the distinct idea that nothing would be seen of the sheet at a distance of six miles, but on arrival at Welney I was surprised to find that with a telescope, placed two feet above the level of the water, I could watch the fixing of the lower edge of the sheet, and afterwards to focus it upon the ground glass of the camera placed in the same position.

The atmospheric conditions were very unfavourable, a day of sunshine having succeeded several wet days and thereby caused an aqueous shimmering vapour to float unevenly on the surface of the canal and adjoining fields. This prevented the image from being as sharply defined as it would be under better conditions; but the sheet is very plainly visible nevertheless. This trouble is well known to all who have practised telephotography.

With regard to the lens used, I may say that this had an equivalent focal length of between 16 and 17 feet, which ensured an image of appreciable size being obtained at such a distance.

I should not like to abandon the globular theory off-hand, but, as far as this particular test is concerned, I am prepared

to maintain that (unless rays of light will travel in a curved path) these six miles of water present a level surface.

Yours faithfully,

For J. H. DALLMEYER, Ltd., E. CLIFTON.
(Chairman: The Rt. Hon. the EARL CRAWFORD, K.T., F.R.S., etc.)
25, Newman Street, London, W.

The Scientific Department under the control of T. R. Dallmeyer, F.R.A.S., etc.
And
Managing Director: G. E. St. L. Carson, B.A. (Cantab), B.Sc.

Thus, by the aid of the latest discoveries and improvements in the art of photography, the earth's unglobularity is proved, and this fact coupled with Proctor's admission that, "*if with the eye a few inches from the surface of the Bedford Canal, an object close to the water, six miles distant from the observer can be seen, there manifestly would be*

Something Wrong in the Accepted Theory,"*

should awaken present-day scientists to the reality that there IS something wrong.

*Myths and Marvels of Astronomy.

DR. LEASK ON JOSHUA X.

Dr. Leask was once asked the following questions: "In the case of the miracle related in Joshua x., is it to be supposed that God wrought such a stupendous wonder as would be involved in the actual stoppage of the earth in its orbit, and consequent arrest, for the time, of the whole solar system, and possibly of other systems also? Or, is it to be supposed that by some supernatural appearance, the effect (i.e., of continued daylight) desired by Joshua might have been produced, and, if so, by what means could it have been produced? And in what way would you state your hypothesis so as to meet and answer the views of those sceptics who make this passage their great weapon of attack upon the word of God?"

Dr. Leask's reply was as follows: Is it to be supposed that God stopped the earth in its orbit? We can only answer that for ourselves, and that answer is *No*; we never supposed anything so inconceivably marvellous, and so utterly at variance with truth. The history does not say that Joshua wished the *earth* to stand still, for it could never occur to him that it moved, but the sun and moon; and God in pity to his people, and in accordance with the desire of his servant, so ordered it that the sun stood still, and the moon stayed, until the people, had avenged themselves upon their enemies.' If men *will* read the 'earth' or 'the globe' as they choose to call it—a word unknown to the Bible—instead of the 'sun' they must do the best they can to get out of the difficulty; and if they find that impossible, which assuredly they will, the solution is obvious—reject the Bible for saying what it never said! This is so easy, so logical and so worthy of honest and honourable men! It is true that in rejecting the Bible for the story which they have palmed upon Joshua, they may lose all Divine truth, and come short of the offered prize of eternal life in Christ; but what of that? Science, glorious science, must be upheld at any cost, although this wonderful goddess is afflicted with a short memory, and contradicts herself with edifying frequency.

Is it to be supposed that by some supernatural appearance the effect was produced? The "suppositions" in this case would form a rich chapter in the curiosities of literature, and would be very entertaining, but for the sad fact that they prove their authors to have been firm believers in a scientific theory, which they accepted on the word of men, and to which the Word of God must at all hazards bow. As we are under no such necessity, we do not "suppose" any mere appearance, or ocular illusion, but accept the grand FACT that the sun stood still, and produced the desired result.

How would we state our hypothesis so as to meet and answer the views of sceptics? We should be very glad indeed to see sceptics brought to the belief of the truth, as many years of labour with the voice and the pen prove; but we have no hypothesis to state on this subject. There is no need of any. The event is stated as plainly as any other in the history of the great Jewish general. Copernicus does not trouble us when the Maker of the earth speaks about it.

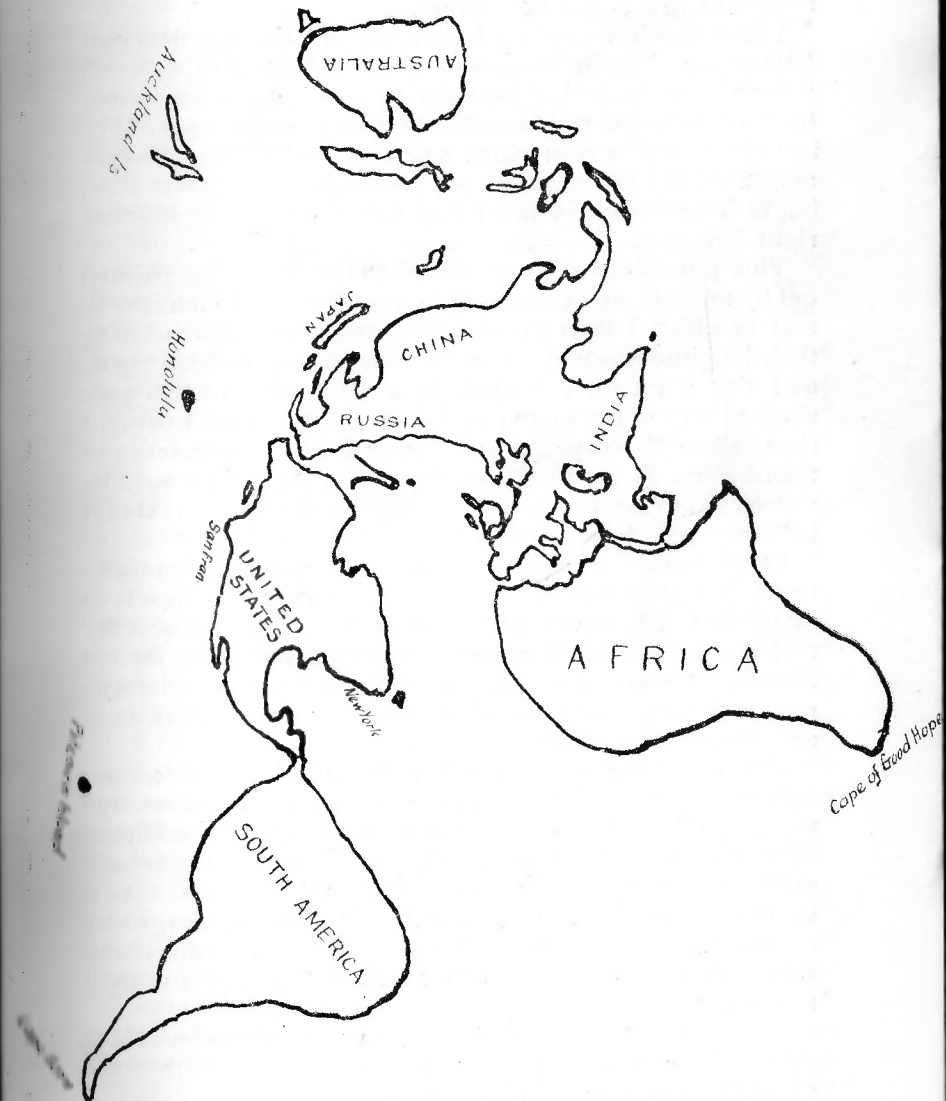
The magnificent fable of scientific astronomy does not shake our faith in the testimony of the inspired writers respecting the world. The earth is an immense plane, at rest where God placed it, not a globe flying through space with lightning speed. The sun is a light in the firmament, moving above the earth, in his 'circuit' daily, as the beneficent Creator ordained; and to stop him for a day in his progress, although the act of sublime omnipotence, like that of stopping the river for the ransomed to pass over, troubled no "globes" and caused no derangement in "solar systems." The immobility of the earth is unquestionably taught in Scripture; reason and common sense, as well as faith, say that this must be true; and we must go back to the old system of the universe, as well as to the old doctrines of the faith, if we would be astronomically as well as theologically sound. We are under no obligation to account for certain well known astronomical phenomena in harmony with the fact that the earth is neither a globe nor in motion, as our business is simply to vindicate the truth of Scripture; nevertheless, we believe it can be done; but even if it were otherwise, we should still accept the evidence of the Creator respecting "the earth he has founded upon the seas and established upon the floods." Finally, whatever may be true or false in scientific astronomy, no man living can reconcile it with the narrative in Joshua, when the impudent assumption is made that the stoppage of the *earth* is meant by the stoppage of the SUN! We at least, believing that holy men of God spake as they were moved by the Holy Spirit, accepting their testimony reverently without troubling ourselves with the question whether it agrees with orthodox theology or orthodox science. The Scriptures are right and the *savans* wrong, notwithstanding the wisdom and learning of the latter.

We ask any man that has the fear of God in his heart, whether the Bible, through which the Creator of the world speaks to His creatures, *can* make all these mistakes about the rising, and daily circuit, and setting of the sun? It is one of the pet phrases of the philosophers, that "the Bible was not given to teach us science." We reply, we will not allow science to make our Father's Book a tissue of falsehoods by the suggestion that its writers said things which they knew to be untrue and misleading.

THE EARTH, ACTUALLY, FROM GREENWICH

BY MIDDLETON

JUNE 1904



CONVERGING MERIDIANS DOWN SOUTH.

Shortly, I do not believe in converging meridians down south, to a South Pole. Nor do I believe in any converging meridians to a North Pole either.

I do not believe in a North Pole, and still less in a Southern Pole of the globular hypothesis. I do believe in a North Polar Ocean, and also in southern ice; but to what extent both, or either, prevail is certainly a very fair question. For instance: in this plan which now appears in Lady Blount's magazine, the meridians do not converge to any North Pole, but to Greenwich, and this I find to be a very long step in a right direction.

This possibility of convergence to Greenwich was pointed out by myself many years ago, in a publication I then issued, and in which I then charged the astronomers with radiating their longitudes actually from Greenwich, and shifting them, and the point of radiation, to a suppositious north pole situated on the top of an imaginary globe. What I thought then, some thirty years ago, I now hold with greater force than before. I see that *it must be so*, and England may be proved to be the centre of the earth, and this accounts for its comparatively *equable* climate.

Other countries have both much colder winters, and also much hotter summers. Northern China, for instance, is intensely hot in summer, whilst its winter is of such severity that the rivers freeze for months at a time, and even the sea freezes. Japan, again, has a warm moist summer, and grows rice, and even tea, but in winter it suffers greatly from snow and the cold is intense.

Yet only a few hundred miles makes all this difference, owing to the sun being of very moderate dimensions, and travelling instead of standing stationary, and, in addition, being tolerably close to the earth. If the sun were to remain stationary we should very soon be burnt to cinders. As it is, matters are dangerous enough in some countries, where immense forests become like touchwood and ignite themselves, threatening destruction to cities and towns in their locality.

This is not at all in keeping with a spinning globe, which should be constantly cool, if not indeed cold, with a sun situated ninety-five millions of miles away.

In North America, at such a moderate place as Chicago, sunstroke prevails in summer, whilst people are sometimes frozen to death in winter. These extraordinary extremes can arise only from the motion of the sun—and a sun fairly close to the earth.

Then take St. Petersburg, in Russia. It is about fifteen hundred miles from London, and its climate is temperate when compared with Manchuria or Port Arthur, in the latter we see that the ocean actually freezes for miles outside the harbour.

Mosquitoes abound in some places which have very severe winters, and this must arise from the fact that the sun travels to them in summer.

Converging meridians are not to be depended upon entirely from any point; but a radiation from Greenwich certainly seems to be more helpful than from any other spot, and when dealing with southern longitudes, radiation requires to be tempered with distance and judgment.

The longitudes are, however, representative, and more so directly from Greenwich, and on the *English* side, than any other way.

As regards these especially southern and converging meridians to a suppositious south pole, some such appearance may occur in the months of November and December, but I feel certain that they can be traced to the long *loop* of the sun which runs down south of New Zealand and returns around and of course south of Australia. Something of this sort does occur, beyond a doubt, in those particular months, but how about the other months.

If there is any weight in this claim for a South Pole, and converging meridians to it, the appearance should last for about *five months* and *not two only*. Does it? that is the question.

Now-a-days when numbers of people have friends in Australia this point should not long remain in doubt. For my own part, I did not see anything of the sort, and I was there on Christmas day, in Adelaide, whilst the whole record of our voyage was opposed to any such appearances, even in November and December. Anything of the kind must be *confined* further east and south of New Zealand. And this narrowing of the subject is totally opposed to a South Pole, *such as is claimed for a globe*. A hole in the barrier of ice there may be, but no South Pole of the earth's supposed axis.

At the same time it does not matter to myself personally, as I have so many different ways of laying out the earth, that if this plan from Greenwich does not hit it another one is sure to do so; but I must say for this one, now advanced, that it gives the very best account of the climates of the earth. Even the paddy fields of Japan can be accounted for by the ellipse of the sun, which simply runs up towards Japan, and makes that country almost tropical in summer, whilst it is terribly cold in winter, and much given to snow, as might be expected from its humid summer.

Then, again, the present expedition to Tibet shows that country to be miserably small and quite an arctic region, whereas according to the globe it should be very expansive and quite tropical in latitude, 30° North. Of course the elevation of Tibet would account for a little cold, but not the excessive frost which has been met with; and nothing can get over the smallness of a country which should be very expansive, and also thickly populated. Instead of this being the case, we find a very small region and few inhabitants.

Tibet is simply in keeping with Asia generally—the more you look at it the more it disappears.

E. E. MIDDLETON.

THE EARTH: IS IT A GLOBE?

(continued from p. 376, vol. iv.)

In whatever direction men have travelled from the north towards due south it has been found mechanically impossible to proceed beyond a certain distance. This is admitted by Professor Marienburg, of the University of Chicago, who is a startling theorist, declaring that the end of the world is near at hand—having “jumped its orbit,” so to speak, and is wobbling round in space like a drunken man, and this irregularity will cause our summers to become hotter and hotter, whilst our winters will be colder and colder, so that in the course of 20 years, at the outside, we shall be either roasted or frozen to death. Even this would be better than being comet-stricken after the fashion so graphi-

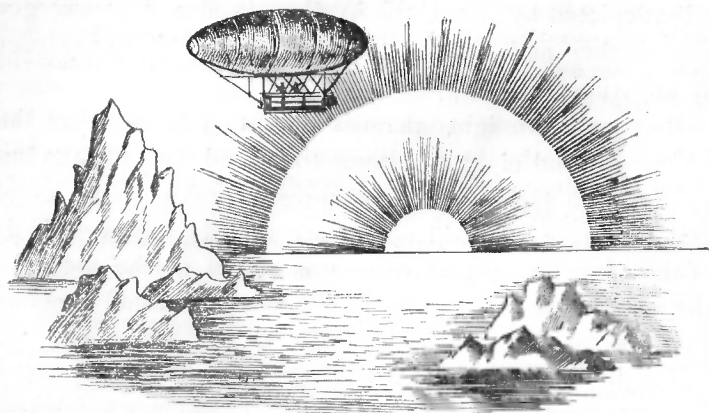
cally depicted by Mr. H. G. Wells. Professor Dewar goes even further and says that such a catastrophe may occur at any time.

If ever the Almighty permits man to reach further than where day and night now come to an end, he will then have more knowledge of what is at present unknown to us all. But I believe this will not be accomplished until “the day of the Lord,” which will come “as a thief in the night,” at the appointed time. “And the heavens shall pass away with a great noise.

The intensified power of the sun (as prophesied) may be the appointed means in the future (we know not how near) of melting the great ice barriers which we believe form an unsurpassable boundary to the sea. But if it be the will of God that these immense ice barriers shall be melted, and the waters thus permitted to pass hence, as it is written “there was no more sea,” man may then pass unto “the Great Beyond.” This we know not now.

The accumulation of ice round the South and North Poles (the “ice caps” geologists call them) are becoming thicker and thicker. More ice is stated to form by freezing during the long arctic and antarctic winters than is lost through melting in the short summers.

In *Science Siftings*, under date February 7th, 1903, it was stated that Sergeant Julius Fredericks, a survivor of the Greely Expedition, and one of the three who also made the sensational dash for the North Pole, reaching (to use the language of the journal under notice) the 83rd parallel—will leave the United States, in order to make another attempt to reach the coveted goal—intending to make the venture in an air-ship being constructed for the express purpose. A voyage will be made to the 70th parallel in ships. Here a provision camp will be established. Then the voyagers will start north in the airship—represented in the annexed illustration:



It is argued that the distance between the 70th parallel and the pole may be overcome in such a ship. Whether this proposed voyage over arctic ice and snow will be successful is, in our opinion, open to grave doubt. Mr. Fredericks' opinion is that the country at the 83rd parallel was once inhabited by a highly civilized people, and that as the pole is approached the climate moderates, and that "immediately around it there are all kinds of vegetation to sustain animal life." He (Mr. Fredericks) also believes that the people who once "lived at the 83rd parallel" have moved further north to escape the increasing cold—and that they now inhabit the country immediately round the "pole." He says that during his last expedition he passed the remains of villages, and that "in every case the woodwork was petrified. What remained of the houses showed superior handiwork in design and architecture." The night before they started to return, the aurora appeared in dazzling brilliancy in the northern sky, and they saw a great city in the distance composed of buildings of various heights, whilst around it were hills and valleys covered with verdure. They all looked upon it and wondered at it; but there it was, as clearly outlined as though it were but a mile away.

Mr. Fredericks says: "I am sure this was not a mirage, and I believe I have seen the city, which is now inhabited by the people who migrated from the south to the warmer climate around the pole."

In this last quotation Mr. Fredericks says he *believes* he has "seen a city, with verdure clad, around the north pole;" but, if he has seen the city, why does he want to say that he believes he has seen it?

Referring to the statements and deductions of Mr. Fredericks—the editor of the journal under notice says that, if they prove to be correct, "generally accepted beliefs will be considerably shaken."

This brings to my mind a striking paragraph in *The Leader*, June 24th, 1904, the wording of which was as follows:

"THE SOUTH POLE."

"An ingenious theory is advanced by Carsten Borchgravn, the Antarctic explorer, in support of his belief that the South Pole is surrounded by a continent of land, about twice the size of Europe. The northern hemisphere of the earth measures far more than the southern hemisphere, as far as is known. Therefore, since we are agreed that the earth is a sphere, if there was not a great continent south of the Pole, how, he asks, could the earth maintain its balance?"

"And on this belief the explorer bases another in the existence of strange animals, formations, new people, new civilizations, new religions, new developments—all awaiting beyond the unknown sea. For which reason naturally South Pole exploration is infinitely more important than the finding of the North Pole."

The above speculations may be very interesting, but they are merely speculations, and unlikely to prove true. But if any people should be found there, it would be safe to predict that they will not be "new peoples," nor "new civilizations;" for, as the Bible shows, all the inhabitants of the earth have come from one source, and whenever, in the past, any new inhabited island, or continent, has been discovered, the people were always found sinners and mortals like the rest of mankind, and generally less civilized, and more degraded.

"STRETCHED OUT UPON THE WATERS."

BY E. H. RICHES, LL.D., F.R.A.S.,

Member of the "London Mathematical Society,"
late Cantab, etc.

(continued from p. 394.)

It may be stated here, that, experiments tending to show that the earth is fixed and free from all motion, have been brought under my notice, which are of a somewhat interest-

ing character. It is taught in modern schools that "the motion of the earth with its accompanying atmosphere, is not perceptible to us; but the sun *appears* to us to move. Therefore we will now suppose this apparent motion of the sun to exist in reality, and in doing so we will regard the locus of its motion as a circle, at a certain distance from the *plane* of the earth's surface, concentric with the North Pole. It is at once acknowledged, that if the apparent motion of the sun be noticed from any northern latitude, and for any period before and after the time of its passing the meridian (or southing) it will appear that, in its motion to describe the arc of a circle."

Now any object, moving in an arc, cannot possibly return to the centre of that arc without describing a circle. It would seem then, that the sun does this daily, and that visibly.

To support this, we might call to mind the observations of the arctic navigator, Captain Parry, who, with several others with him, upon ascending high land at the North Pole, saw the sun *describing a circle upon the northern horizon*, and that more than once. Regarding the earth's surface as a vast plane this can be readily conceivable, and also that the circular path of the sun's daily motion be over some countries of this plane. In performing its journey, the sun may travel at just such a rate as to afford light to those countries within its reach, for the period of time called a day. And we believe the *extent* of land and water thus receiving light to be such as to admit of this idea. It is well known that those parts of the earth's surface, in the vicinity of the north pole, have no light from the sun in some months of the year. This is by no means a difficulty to be accounted for, in the theory which we are supposing, the diameter of the sun's path is constantly changing, —diminishing as it does from Dec. 21st to June 15th, and enlarging from June to December. There is no doubt of this fact, for it is proved by the northern and southern declination; in other words, that the sun's path, is nearest the north pole in summer, and in the winter it is furthest away from it.

In the following table by Mr. Glaisher, the difference of altitude caused by the difference in position, as noted at different times of the year, may be seen.

Sun's altitude, at the time of southing, or being on the meridian:—

| Date. | Sun's altitude. | Time of Southing. |
|----------|----------------------------------|----------------------------|
| June 15 | ... 62 deg. | ... 0 m. 4 s. before noon |
| " 30 | ... 61 $\frac{2}{3}$ " | ... 3 m. 18 s. afternoon |
| July 15 | ... 59 $\frac{2}{3}$ " | ... 5 m. 38 s. " |
| " 31 | ... 56 $\frac{1}{2}$ " | ... 6 m. 4 s. " |
| Aug. 15 | ... 52 $\frac{1}{2}$ " | ... 0 m. 11 s. " |
| " 31 | ... 47 " | ... 0 m. 5 s. " |
| Sept. 15 | ... 38 $\frac{2}{3}$ " | ... 4 m. 58 s. before noon |
| " 30 | ... 35 $\frac{1}{2}$ " | ... 10 m. 6 s. " |
| Oct. 31 | ... 24 " | ... 16 m. 14 s. " |
| Nov. 30 | ... 17 " | ... 10 m. 58 s. " |
| Dec. 21 | ... 12 " | ... 0 m. 27 s. " |
| " 31 | ... 15 " | ... 3 m. 29 s. after noon |
| Jan. 1 | ... 15 $\frac{1}{2}$ " | ... 3 m. 36 s. " |
| " 15 | ... 17 " | ... 9 m. 33 s. " |
| " 31 | ... 21 " | ... 13 m. 41 s. " |
| Feb. 15 | ... 25 " | ... 14 m. 28 s. " |
| " 29 | ... 30 $\frac{1}{2}$ " | ... 12 m. 43 s. " |
| Mar. 15 | { On the equator } 36 " | ... 9 m. 2 s. " |
| | { at 6 a.m. } 38 $\frac{1}{2}$ " | ... 9 m. 0 s. " |
| " 21 | ... 42 $\frac{1}{2}$ " | ... 4 m. 10 s. before noon |
| April 15 | ... 48 " | ... 0 m. 8 s. " |
| " 30 | ... 53 " | ... 2 m. 58 s. " |
| May 15 | ... 57 " | ... 3 m. 54 s. " |
| " 31 | ... 60 " | ... 2 m. 37 s. " |

Briefly then, it may be observed, that the 6 months' darkness at the North Pole is at once accounted for, by noting the change in the length of the diameter of the circular line of motion, of the sun's course. The sun travelling over the plane of the earth, at once too, decides the question of *why* some countries should be warmer than others. Those immediately under the influence of the sun's rays, must naturally be warmer than those more remote. We have supposed then, the sun to travel in a circular course parallel to the earth's surface, and perform the whole circle of its journey once in 24 hours. Thus in 24 hours, every part of the earth experiences day and night, sunrise and sunset. At whatever place on the earth's surface an observer may be,

it will appear to him that the sun seems to him to *rise* in the east (with respect to his position) and *set* in the west.

According, though, to one supposed theory, however, the sun is supposed to be *always* at the same distance from the earth's surface, and the *apparent arc* which it makes from our sunrise and sunset is only natural if the earth *be* a plane. Optics prove this. Let us compare the sun to a balloon sailing away from us. As the distance between us and the balloon increases, although its altitude may not increase, it will appear to us gradually to approach the horizon. So it is with our view of the sun; when at sunrise it first appears to our view, it would *seem* to be rising from the horizon. By the same rule in optics, at the close of our day, when the sun is travelling away in the distance, *sunset* will come to us, as the sun appears again to dip beyond the horizon; so, as sunset is coming on with us, sunrise is coming on to others. This is plain and consistent, and worthy of consideration.

(to be continued.)

THE BEDFORD LEVEL.

The Ed. of *The Earth* has received the following characteristic letter from a correspondent, dealing with her recent visit to the Old Bedford Canal, and experiments thereon.

"Dear Lady Blount,—Many thanks for your kindly sending me *The Earth*—and especially wherein is the visit to your Bedford Level; and I find you are greatly in error in your calculations, for according to the curvature of the first mile the *maximum* is in the centre, or *half-mile* only, and so the centre of the 6 miles is at the third mile, which is the greatest curvature. Hence $3 \times 3 = 9$, 9×8 in. = 6 ft. only, and not 24 feet as you fancy it to be; and if I recollect right this was to a few inches what was proven in court in John Hampden's case, when the £500 wager fell through, because it was well known as a matter of fact, and so no wager or cavilling could stand in law, therefore the Newtonian wagerer had to return the money.

"When a young man I served $3\frac{1}{2}$ years in the office of a ship-owner's firm in Ann Street, Belfast, quite near to the notable 'Long Bridge' which commanded a sea view over towards the Isle of Man, and we used to look out for the lumber ships' arrival from Canada, and with a powerful telescope we could see the *masts* of our ship flying her private signal while the hull and lower parts of the masts were invisible,

and from my knowledge of astronomy I recollect calculating the distance to be 28 miles at the time of the morning, which I noted, and asked the captain if I was right and he corroborated my calculation from his log book.

"Of course I knew Parallax and John Hampden both, and after having one hour's talk with the former he gave up all his ideas of the flat earth, and disposed of his astronomy and literature a few days after, and ceased, ever after, to promulgate the idea. I am sorry that you should be so *hypnotized* with the idea, for there is a factor which astronomers all are aware of, viz.: 'refraction' of the air, which so to speak bends the horizon, or rising sun, upwards before its time, and makes the curvature of the sea to a *certain extent level*, and hence we see the sun *seemingly before her real rising*. There can be no question of the sun being beneath our feet at midnight, and the moon's light is a reflection of the sun's indisputably, which it could not be if your teaching of a flat and motionless earth were right. Parallax acknowledged to me he conceived his ideas when seven years of age on hearing a lecture on astronomy.

"Dear Lady Blount, I know you to be a genuine *honest-minded* woman and most desirous of promulgating the truth in Nature, and of the most advanced views possible, and thus I feel it my duty to write you, to keep my *conscience clear*, for I feel for you. Although I had no special interest in astronomy beyond seeing the infinite *goodness, justice, and mercy in God*—who has placed the Kingdom of Heaven in each and all of us who choose to accept and develop it, and thus see his eternal life in every living thing as a spiritual living entity.

With best wishes, I am, very truly yours, W.

Where the writer of the above letter gets his notion in respect to rate of curvature, when applied to an assumed globular earth 25,000 miles in circumference, we need to surmise.

There is no need for us to follow our correspondent in his arguments, as he stands alone in supporting a globular earth while at the same time he ignores the fundamental phenomena required and necessitated by a globe.

If W. is a globist he must accept the principles of globists, and reason on the data of his own authorities. He attempts to ignore at one stroke both *their theories* and *our facts*.

It is useless to argue with anyone who takes up such an untenable position as this.

All that is necessary for us to do is to explain to him fully what his own theory is, what it rests on, and what a globular earth requires and necessitates.

We have nothing to do with his greatest rise being in the first three miles. He must settle that point with Sir Isaac Newton and Greenwich Observatory. It has nothing to do with us.

We stand by our experiments of *facts*. He must stand

by globular *theories*. He cannot have it both ways. He cannot throw them over in order to knock us over.

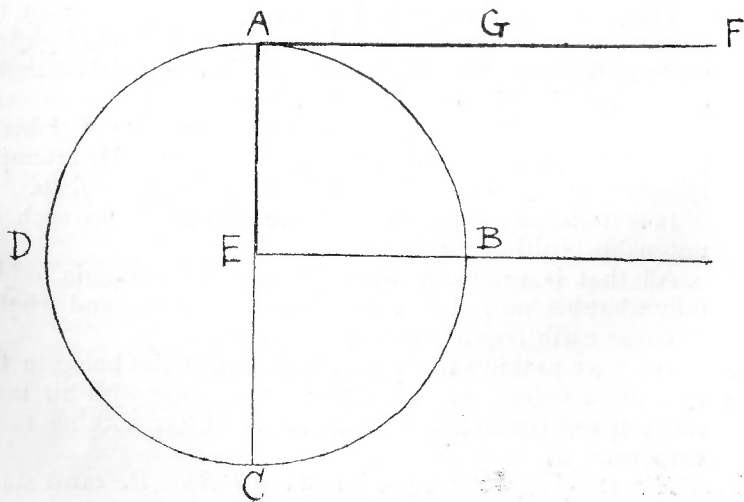
Now the globularists demand two positions; and we willingly concede them. For if the earth be a globe, they are absolutely necessary to that theory. They all stand or fall together.

- I. The first is, that on a globe the observer, wherever he stands, is, and must be, *at the top*.
- II. From this "top" the surface of the globe must *fall away in every direction*, and this falling away from the tangent is called *the depression*.

In our various papers we have spoken of the rate and amount of this depression as being ascertained by multiplying the *square of the distance* by 8 and treating the product as inches. This though accurate enough for moderate distances is not a scientific way of expressing the calculation. It is only a rough "rule of thumb," very useful and handy for quick calculation.

But as our correspondent seems to ignore it or at any rate not to understand it, we feel it necessary to explain more fully the phenomenon *required* by his position.

We will explain it by this diagram.



Let $A B C D$ be the outline of the globe. The diameter is stated to be about 8,000 miles, and the circumference roughly about 24,000 miles. In this statement the further supposed phenomenon of the so-called "flattening of the poles" has to be taken into account.

Let $A G F$ be the tangent, or the line of sight of the observer, A being his position "at the top." From this line the surface of the globe must fall away in the direction of $A B$.

But $A B$ is about 6,000 miles and $A E$ is 4,000 miles. Therefore in travelling from A to B the observer will be, on reaching B , 4,000 miles below the point G on the tangent line. The distance, 4,000 miles, will be the amount of the *Depression*.

Now the law which governs the calculation of the amount of this *Depression* is given by Sir Isaac Newton as fundamental to globular phenomena. He shows and proves the law, that,

The square of the *Distance* is equal to the product of the *Diameter* multiplied by the *Depression*.

He expresses it thus:—

$$(\text{Distance})^2 = \text{Diameter} \times \text{Depression}.$$

This is given as a corollary of Lemma XI. in Newton's *Principia*. It has nothing to do with us: but is what is necessary if the earth be a globe.

Now, that statement of the law being correct it follows that the square of the *Distance*, divided by the *Diameter* equals the *Depression*. Or:—

$$\frac{(\text{Distance})^2}{\text{Diameter}} = \text{Depression}.$$

If therefore we wish to find the *Depression* for any given distance we must first square the distance, and divide it by 8,000, (that being the number of miles in the earth's diameter). This will give us the amount of the *Depression*.

The fact that 8 times this particular distance is 64,000, and that the number of inches in one mile is very nearly the same, viz.: 63,360, accounts for the "rule of thumb" which simply multiplies the square of the distance by 8, and reckons the answer as inches.

It will be seen by working out the *Distance* experimented

on in the Bedford Level, how nearly this rough and ready rule corresponds with the exact mathematical calculation.

The distance in question is 6 miles. Now

$$\frac{6^2}{8,000} = \text{the Depression.}$$

But we cannot divide 36 miles (6×6 , or 6^2) by 8,000 without reducing the 36 to some smaller dimension. Let us reduce 36 miles to inches, and then we have

$$\frac{2,280,960}{8,000} = 285 \text{ inches (Depression).}$$

By the rule of thumb method we have

$$\begin{array}{r} 6 \times 6 = 36 \\ \quad \quad 8 \\ \hline \quad \quad 288 \\ \hline \end{array}$$

So that by the two methods of calculation, the "rule of thumb" method (288 inches) is only 3 inches in excess of the Newtonian mathematical method, which is 285 inches.

In the Bedford Level experiments the signal, which was visible at 6 miles distance, ought to have been 23-ft. 9-in. below the tangent line of the eye on the horizon.

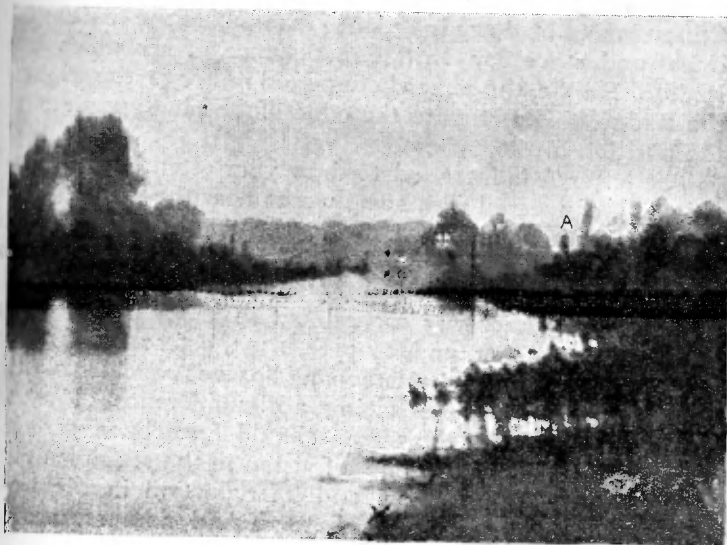
This is a complete answer to W.'s objections; although I doubt not that they were proffered with good intentions.

When it comes to calculations of the globular theories we prefer Sir Isaac Newton's own *Principia* to the calculations of his would-be followers.

The phenomenon of the surface of the horizon rising to the tangent level of the eye, is apparent only, and is due to perspective. Astronomers make a great distinction between "apparent" motion and "real" motion. We claim the same liberty here and ignore the *apparent* horizon in discussing the *real* horizon.

COLLAPSE OF THE GLOBULAR THEORY.

The Surface of ALL Standing Water Proved to be Absolutely LEVEL.



We give, on the first page, two reproductions of the photograph taken on the Bedford Level.

The second photo is marked with dots, a cross, and the letter A, to indicate to the reader the position of the screen, etc.

The two dots (:) are the screen and its reflection in the water below it—near Bedford Bridge.

Trees near this bridge form a background to the screen, and its reflection rests upon their shadow in the water. The continuation of the canal beyond Bedford Bridge cannot be seen from the direction of Welney Bridge, even quite near it, because there is a junction of canal paths at that point, and their several courses can only be seen by standing on the bridge itself, or proceeding to a point beyond it.

Dallmeyer's latest pattern Photo-Telescopic Camera was used for the experiment. It was placed in position less than two feet above the ground-level by the expert operator from Dallmeyer's, and that gentleman, Mr. Clifton, being a globularist (see his letter, printed below) it cannot be suggested that he would lend himself to unprofessional practice, and were such conduct on his part possible he would have tampered with the instrument, or the *locus in quo*, so as to favour plane-earth teaching; he, however, irrespective of results, acted up to the letter of the test experiment. Mr. Clifton had to lie down in order to manipulate the instrument, close under Welney Bridge, a distance of six miles from Bedford Bridge, the screen being fixed rather to the right of the bridge. The cross at the edge of the photograph marks the position of the camera.

The letter A is intended to draw your attention to a dark chimney, connected with some works near the canal. This chimney is just midway betwixt the two bridges, *i.e.*, it is three miles from Welney Bridge, and three miles from Bedford Bridge.

This experiment was carried out in misty and very unsatisfactory weather, on May 11th, 1904, before Lady Blount and several scientific gentlemen, and proves conclusively that if the world be a globe having a circumference of 25,000 miles, the bottom of the screen should have been certainly over 20 feet below the line of vision in the six miles view. As the whole of the screen, and its reflection in the water beneath were observed and photographed, no curvature can

possibly exist; the theoretical scientists are wrong and beaten, and Parallax, John Hampden, Wm. Carpenter, and the army of Zetetics were, and are, right in their contention that the world *is not* a globe!

* * * * *

To Lady Blount.

Dear Madam,

Referring to the experiments at Salter's Lode, Downham, Norfolk, May 11th, 1904, I have much pleasure in testifying to the fairness of the conditions under which they were conducted. I arrived on the spot with the distinct idea that nothing could be seen of the sheet at a distance of six miles, but on arrival at Welney I was surprised to find that with a telescope, placed two feet above the level of the water, I could watch the fixing of the lower edge of the sheet, and afterwards to focus it upon the ground glass of the camera placed in the same position.

The atmospheric conditions were very unfavourable, a day of sunshine having succeeded several wet days and thereby caused an aqueous shimmering vapour to float unevenly on the surface of the canal and adjoining fields. This prevented the image from being as sharply defined as it would be under better conditions; but the sheet is very plainly visible nevertheless. This trouble is well known to all who have practised telephotography.

With regard to the lens used, I may say that this had an equivalent focal length of between 16 and 17 feet, which ensured an image of appreciable size being obtained at such a distance.

I should not like to abandon the globular theory off-hand, but, as far as this particular test is concerned, I am prepared to maintain that (unless rays of light will travel in a curved path) these six miles of water present a level surface.

Yours faithfully,

For J. H. DALLMEYER Ltd.,

E. CLIFTON.

(Chairman: *The Rt. Hon. the EARL CRAWFORD, K.T., F.R.S., etc.*)

25, Newman Street, London, W.

The Scientific Department under the control of T. R. Dallmeyer, F.R.A.S., etc.,

And

Managing Director: *G. E. St. L. Carson, B.A. (Cantab), B.Sc.*

Thus, by the aid of the latest discoveries and improvements in the art of photography, the earth's unglobularity is proved, and this fact coupled with Proctor's admission that, "*if with the eye a few inches from the surface of the Bedford Canal, an object close to the water, six miles distant from the observer can be seen, there manifestly would be*

Something Wrong in the Accepted Theory,"*

should awaken present-day scientists to the reality that there IS something wrong.

*Myths and Marvels of Astronomy.

REPRINTED FROM

"THE EARTH,"

A Monthly Magazine of Sense and Science, upon a Scriptural Basis;

And of Universal Interest to all Nations and Peoples under the sun.

Edited and Published by E.A.M.B., 11, Gloucester Road, Kingston Hill, Surrey, England.

Copies of this leaflet, price 1/- per 100, may be obtained of Lady BLOUNT, 11, Gloucester Road, Kingston Hill, Surrey.

All communications and enquiries respecting this Magazine and the teaching it upholds, and all questions and matter for insertion, should be addressed to E.A.M.B., 11, Gloucester Road, Kingston Hill.

"THE EARTH'S" OBSERVATORY.

The Ed. does not necessarily endorse statements made under the headings of "The Earth's Observatory," Letters, etc., unless signed Ed. The Earth.

"Lady Blount wishes us to believe this earth of ours is 'an extended plane, on which men and sea are securely kept by great and permanent mountains of ice.' The Copernican theory has, however, lasted 400 years at least."—*Manchester Evening Chronicle*.

THE HELIACAL RISING OF SIRIUS.

In Reply to M.C. and others, in the "British Mechanic & World of Science."

One thousand four hundred and sixty Julian years are in excess of 1,460 true tropical years by 11 days; but 1,460 sidereal years are in excess of 1,460 true tropical years by nearly 20 days. Therefore, at the end of the Sothic period, Sirius would rise heliacally some 8 or 9 days late, if counted by the Julian year; but some 20 days late as reckoned by the actual seasons. The ninth part of 1,460 is 162. [Mr. Dimpleby may possibly have heard of these figures and thrown them into some confused statement.]

When we are dealing with ancient practices, the question is: not "what should we have done with our present knowledge?" Not even "what we might naturally expect them to have done?" But, "what, as a matter of actual fact, they did do?"

The heliacal rising of Sirius takes place for any given country once a year. But the year so given is not a solar tropical year, but a sidereal year; as compared with the tropical year it would throw the beginning of a year later by 1 day in about 70 years. It would not give a sidereal year exactly at any time, for the effect of precession would be to shift the declination of the star slowly, and so to alter the position of its rising point.

But this variation would correct itself in a precessional period of 25,880 years! at the end of which the heliacal rising of Sirius would take place on the same day of the tropical year as at the beginning of the period.

The Egyptians, however, used a year of 365 days— $\frac{1}{4}$ -day short of a Julian year; so that in 72 years, or thereabouts, the heliacal rising of Sirius would fall $18 + 1 = 19$ days later in the Egyptian common year.

The inundation of the Nile fell, of course, on the average, at the return of the same epoch in the solar tropical year.

The Egyptian common or "vague" year, retreated backwards through the tropical year, one day in 4 years, completing its revolution in 1460 Julian, or 1461 "vague" years.

The above information I regard as being absolutely reliable. It has been handed to me from one of the most reliable authorities in the world, and comes from Greenwich Observatory.

"LIVE FOR JESUS."

By an Invalid.

Live for Jesus—in thy youth,
Give to God thy life's best years,
It will save you many sorrows,
Many doubts, and many fears.

Live for Jesus—through the years,
As they meet you one by one,
You will need His grace and wisdom,
If you would life's race well run.

Live for Jesus—He who claims
All your service, all your love ;

For his glory let Him use you,
'Tis for thee He pleads above.

Live for Jesus—when the shades
Of the eventide appear,
Let His light shine o'er your pathway,
Let Him dry each falling tear.

Live for Jesus—for He paid
All our debt upon the cross,
Redeeming us with precious blood,
Not one soul need suffer loss.

WILLIAM J. YOUNG.
(Bedridden).

Composed during quiet moments.

Extract from page 3 of "CHEMISTRY IN DAILY LIFE :"
By Dr. Kassar-Cohn, Professor in the University of Königsberg ;
translated by M. M. Pattison Muir, M.A.,
Fellow of Gonville and Caius College, Cambridge.

"If we consider a little, we shall find many other well established facts in the domain of natural science which no one doubts, although these facts cannot be demonstrated directly. For instance, everyone admits that the shape of the earth is that of a sphere, although no proof of this has yet been found that can be grasped without much difficulty by lay minds."

In a further note he adds : "The fact that at sea the tops of the masts of an approaching vessel are the first parts of her to be seen, is often adduced as the simplest proof of the curvature of the earth's surface caused by the spherical form of the earth. Although the Greeks and Romans often observed the phenomenon in question, yet they did not draw the conclusion that the earth is spherical ; but among them were many clear-headed men. The alleged proof is quite inconclusive of itself, and it came to the front only after the spherical form of the earth had been established on the basis of strictly scientific investigations."

With deep gratitude I beg to express my sincere thanks to each one of my friends who have been so kind as to encourage me by sending letters of congratulation regarding my photograph of the Old Bedford Canal. I should be proud to publish them all, but it would be impossible to print more than the following few extracts.

Colve Stone, N.E. June 20th, 1904.

Dear Lady Blount,—You have indeed achieved a triumph with the photo, at the Old Bedford Canal. Proof positive is at all times acceptable to the unprejudiced mind—though the prejudiced will no doubt read the account of the experiment with a deep drawn sigh. Proof positive is the Truth, and that must in the end prevail. Your persistent efforts in this cause (now crowned with unexampled success) are worthy of a public reward ; and it also adds a further lustre to our ancient British motto : "Y Gwir yn erbyn y Byd" (The Truth before the world).

Yours faithfully, MAR THEOPHILUS.
(Mt. Rev. Dr. Stevens) Archbishop of Caerleon ; Caertroia, etc.
and Chief Patriarch Free Prot. Ep. Ch. of Eng.

H. speaks of your photograph as "a notable piece of work," and I agree with him that it is an unparalleled achievement.—B.

What will the scientists say to your photograph? Will it not put them in a fix?—E. H.

York Mansions. 31 May.
Dear Lady Blount,—What a splendid number of *The Earth* (Nos 47 & 48). Very valuable. I should like one of the photos. You have performed a work which is of national, not to say world-wide value.—E. W. BULLINGER, D.D.

Dear Lady Blount,—Accept my thanks for your full explanation of the photos, each of which will (figuratively) be wrapped up in lavender for future reference. Such business satisfies me more than any food, raiment, or works of art. Just imagine what effect it would have had on Parallax, Hampden, Carpenter, and others of the *old brigade* to see such a demonstration. One thing we may be sure of is, that it would have given them intense satisfaction sooner than they will have it. *It is a glorious victory!*—GREVILLE.

Dr. Alabone is very pleased to hear you were so successful in taking the photo of Bedford Canal.

LETTERS.

Dear Madam,—I am much interested in your Bedford Canal experiments. The curvature of the earth, as you say, should be 24 feet. Now in Chambers' Mathematical Tables, under the heading "Height of apparent above true level," the correction for refraction is given for the distance of six miles as 23 ft. 11 in., which accounts for your observance of the light at a distance of six miles! Can you kindly explain this? And oblige

Yours very truly, PHILLIP P. BROWN.

[They should first prove that there is any refraction over a level canal before they talk of the amount of "correction" required for it. Nature does not need any correction from men.—Ed.]

Dear Lady Blount,—In your last issue of *The Earth*, and from your remarks to some of my friends, you evidently appear to think that Mr. Middleton's ideas respecting the positions of the continents of land is correct. Now may I ask you what authority you have for your belief. Have Mr. Middleton's plans been printed in any other paper or papers but *The Earth*, and if so, will you please give me the names and dates of such papers. Will you also kindly tell me if any geographical scientists have accepted Mr. Middleton's ideas as being possible? The Zetetics I have met say that distances increase south of the equator,—I refer to those who believe in your own theory, regarding which, by the way, I am, since your last lecture, at a loss what to think. I must own that I am shaken somewhat in my former belief in "the whirling globe"! In fact it never struck me that the globe theory could be wrong, before I knew you.

L. E. D.

From CALDWELL HARPER, to the Ed. of *The Earth*. June 9, 1904.

Dear Madam,—Thanks for *Earth* (Nos. 47-48). The diagram on p. 379, showing that “the true area of the sun may be found in the *area of vertical solar rays*,” is quite logical, but it presupposes that the earth is flat. Let us therefore test this presupposition by seeing what it logically leads to. The writer finds the sun is 32 miles, or 50 kilometres, across. Its apparent diameter is 32 min. There are 21,600 min. in a circle; 32 is one 375th of 21,600; that is, one 675th of a circle with spectator as centre, and radius reaching the sun is 50 km. Therefore the whole circle is 675 times 50 km., or 33,750 km. Therefore its radius is 5,370 km.; that is, the sun is 5,370 km. above the earth. Therefore as it is 23 degrees above the horizon of the Polar circle at noon, when it is vertical over the equator, as on 21st March, the distance from the Polar Circle to the equator is $5,373 \times \cotangent 23 \text{ deg.} = 5,370 \times 23 \text{ deg.} = 12,350 \text{ km.}$ But ordinary maps, tested by thousands of journeys, show it to be only about 7,500 km. Therefore the premises of the argument are wrong, and the earth is not a plane.

Also the sun's distance from an observer at the *polar circle* is

$$\sqrt{12,350^2 + 5,370^2} = \sqrt{152,500,000 + 28,800,000} = \sqrt{181,300,000} = 13,500 \text{ km.}$$

$2\frac{1}{2}$ times its distance at the equator. Therefore its *apparent diameter* should be $2\frac{1}{2}$ times less, or 13 min. (The Zetetic theory that self-luminous bodies do not follow the laws of perspective is an assumption contradicted by ordinary observation of bonfires, lamp-flames, etc.) But it is 32 min. Therefore, again, the premises are wrong.

REPLY to the above from the Author of the pamphlet in question—see the “Mutual Relations of the Sun and Earth,” by Dr. ROBERTSON.

The writer of the above totally misapprehends the theory “that the actual size of the sun corresponds with the geographical area of vertical solar rays.” That theory has no direct relation or reference either to the figure of the earth or to the distance of the sun, but is based on two elementary axioms of Optics.—1st: that the rays of light given out by any self-luminous body proceed in straight lines in every direction, from every part of the luminous surface; and 2nd: that on any illuminated surface the shadow of any opaque object is always projected away from the light.

BEDFORD LEVEL EXPERIMENT.—“The outlines of the flags were plainly seen.” How could that be, if they were one behind another and all at the same height above a *level* canal. (a)

Some globularists should have been secured to witness the experiments. Was Mr. Clifton a globularist? (b)

CALDWELL HARPER.

(a) It would be possible to see all the flags along the Bedford Canal, although in a line and at the same height, if the telescope be placed a little at one side—just as you can see a long row of lamp posts on the opposite side of the street. If you want to prove the earth not a plane, you should prove that water is not level.

(b) Yes. See his letter in this issue.—Ed.

REPLY to L. E. D.—In reply to the above letter: I believe that Mr. Middleton is on the right track regarding the continents of the earth. And that they are situated upon the waters of the great deep differently to what is generally supposed and taught in our modern schools by professors, is a conclusion I have long come to. I do not believe that navigators err very much, if at all, in their knowledge of the distances they travel south of the equator; and I have no reason for thinking that they misrepresent distances. They seem to be accurate enough in northern latitudes, so why should we doubt their power to measure distances in southern seas? Certainly I do not think it possible that they can travel miles and miles further than they think they do. And it is equally impossible that hundreds of thousands of navigators wilfully and continually hold together to deceive us regarding distances south of the equator. Therefore, I came to the conclusion that the great continents of land must be differently situated upon the waters to account for southern latitudes from our standpoint.

Mr. E. E. Middleton came to this conclusion many years ago, and he published his own ideas in his own pamphlets. His plans have not appeared in any other paper, save *The Earth*. Nor has any scientist or non-scientist ever spoken to me about them. I have produced them entirely by the leadings of my own judgment, because I thought them a step in the right direction, and to say the least, very suggestive. I regard the one in this issue as superior to any previous production, because it gives longitudes and distances more satisfactorily. But longitude from Greenwich *only*, if it be proved a fact, would certainly be a veritable blow at the globe!

Mr. Maurice Graham writes: “Your notice was included in the album presented to H. R. H. the Prince of Wales, and graciously accepted by him. Believing that you would like to know this, I am writing to acquaint you with the fact.”

I trust that you will not think it empty flattery when I say that I believe you have been *set apart* for this special work, and that the Lord WILL prosper it in your hands; my own experience has been among working men, but when you get an honest thinking workman he does not accept one half the modern scientists say, and with a few practical working points he soon begins to doubt the globe theory. With sincere Christian wishes for your safety and guidance,

I remain, yours sincerely, E.

I must congratulate you on your last Nos. (47 & 48), not only because of the excellence of your articles, but also on account of the great practical work which has been done by you and those who kindly assisted you at the Bedford Level. This is what we want. One ounce of fact is worth a ton of theory, and the experiments you have carried out with modern appliances cannot fail to impress the general public that the present teaching is all awry.

V. A. W.

Accounts of Lectures, &c., given by the Ed. at various places, are held over for a future issue.

The following Publications, some of which are suitable for distribution at meetings, etc., may be had from Lady Blount, 11, Gloucester Road, Kingston Hill, Surrey, England.

| | s. | d. |
|---|----|----|
| Photograph of Bedford Level Canal proving that Water is Level..... | 1 | 0 |
| Bedford Level Experiment, with diagrams of photograph, and explanatory remarks (a folded leaflet), per 100 copies..... | 1 | 0 |
| Diagram of the Suez Canal—100 miles level—with explanatory remarks (a folded leaflet), per 100 copies..... | 1 | 0 |
| Diagram showing False Perspective (copied from Royal Reader, Standard V.), suitable for enclosing in letters; also letter cards of the same— per 100 | 2 | 0 |
| Celestial Phenomena (a pamphlet), each | | 3 |
| Celestial Phenomena, and Strange Proofs of Globularity; each | | 2 |
| Clarion Science <i>versus</i> God's Truth; each | | 2 |
| The Mutual Relations of the Sun and Earth, The South Pole, etc.; each | | 2 |
| Adrian Galilio; with extra binding, 5/-; cloth, each | 1 | 0 |
| God's Coming Kingdom (a letter booklet); per dozen | 1 | 0 |
| Letter Booklets.—The Lord's Day. Why? Gather. Counterfeit Coin. per dozen | 1 | 0 |
| The Signs of Christ's Coming; per 3 dozen..... | 1 | 0 |
| Questions and Answers on the Bible and Nature; each | | 2 |
| Zetetic Questions and Answers; each..... | | 1 |
| Homely Talks (soon ready); each | 1 | 6 |
| Zetetic Cosmogony (soon ready); each | 1 | 6 |
| A Number of Miscellaneous Pieces, set to Music; each .. | | 2 |

Many other pamphlets, etc., a list of which will be sent on application.

The Magnetic Nerve Invigorator Co.,

JONATHAN NICHOLSON,

22, Budge Row, Cannon Street,

LONDON, E.C.

Price of Appliances £1 1s., £2 2s., & £3 3s.

Instalments may be arranged.

THE EARTH.

VOL. V.

Oct 1904

No. 51.

THE SUN AND MOON MIRACLE.

Under the above heading an article appeared in *The Messenger* for May, 1904. *The Messenger* is a monthly paper which professes to teach advanced religious truth. It also advertises, on its covers, criticisms of popular and sectarian doctrines; also a reply to the higher critics, and "Joshua's address to the sun and moon."

It might be expected that a paper of such pretensions would adhere to strict Bible teaching at all hazards, as against so-called scientific theories respecting the universe of God's Creation. But the article under consideration betrays more concern to reconcile Bible statements with the perverted "science" of the day, especially of course the so-called "science of astronomy, than to find out what is the truth of God on such matters. Hence the editor is more ready to quote from men who uphold modern theories of astronomy, than from Christian Zetetic writers who can give the only explanation of the miracle which is at all consistent with Bible teaching. But the editor of *The Messenger* seems to ignore these, and tries with others to make the divine records bend into something like harmony with the science of the day. This seems highly inconsistent of one who professes a superior standard of Bible exposition.

The editor of *The Messenger* quotes from *The Glasgow Herald*, which was reviewing an article on the subject in the *Church Quarterly*. From his article I will give the following extracts:

"One of the most frequently discussed of these difficulties has been, to all appearance, solved with admirable scholarship, and in the most conclusive manner, by a writer in the current number of the *Church Quarterly*. Probably no miraculous intervention of providence has presented a more formidable problem to human reason than that at Gibeon, when the sun stood still in the midst of the heavens in order that Joshua and his people might avenge themselves on their enemies. That the sun was actually and literally arrested in his mid-day course